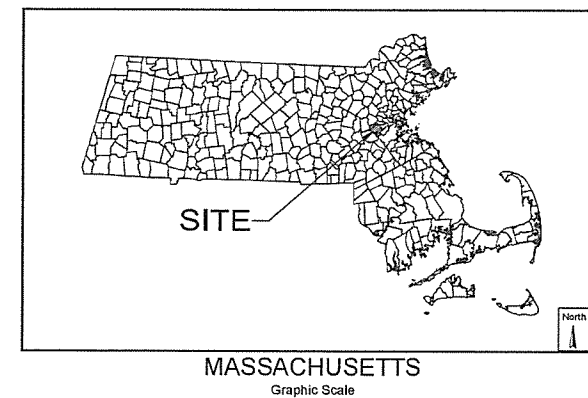


ZERVAS ELEMENTARY SCHOOL  
 30 BEETHOVEN AVENUE  
 NEWTON, MA 02460  
 SITE PLAN REVIEW  
 SEPTEMBER 18, 2014  
 (REVISED NOVEMBER 14, 2014)

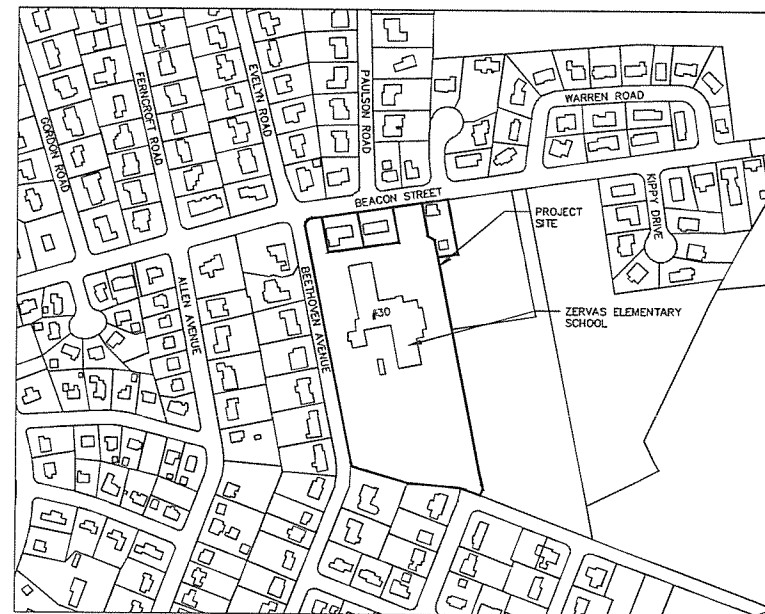
CITY OF NEWTON



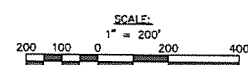
**Designpartnership**  
 OF CAMBRIDGE INC.

ARCHITECTURE  
 PROGRAMMING  
 MASTER PLANNING  
 INTERIOR DESIGN

HOOD BUSINESS PARK  
 500 RUTHERFORD AVENUE  
 CHARLESTOWN, MA 02129  
 T 617.241.9800, F 617.241.5143  
 WWW.TDPC.COM



LOCUS MAP



Zervas Elementary School  
 Dimensional Controls

Zoning District	Setbacks				Total FAR	Building Ht. (FT.)	Maximum No. Stories	Maximum Building Lot Coverage	Minimum Open Space
	Minimum Lot (SF)	Front	Side	Rear					
Single Residence 1									
Required	25,000	40	20	25	0.2	35	3	30%	50%
Provided	284,703	45	47/301	N/A	0.28	39'-8 3/16"	3	13%	60%

OWNER:  
 CITY OF NEWTON  
 100 WALNUT STREET  
 NEWTON, MA 02460

APPLICANT:  
 CITY OF NEWTON SCHOOL DEPARTMENT  
 100 WALNUT STREET  
 NEWTON, MA 02460

NAME OF PLAN	SHEET NO:
EXISTING CONDITIONS PLAN	EX0.01 – EX0.02
CIVIL NOTES AND LEGEND	C0.0
SITE UTILITY PLAN	C1.0
SITE LAYOUT, GRADING, AND UTILITIES PLAN	C1.1
EROSION AND SEDIMENT CONTROL PLAN	C2.0
EROSION AND SEDIMENT CONTROL DETAILS	C3.0
EROSION AND SEDIMENT CONTROL DETAILS	C3.1
SITE DETAILS	C3.2
SITE DETAILS	C3.3
LANDSCAPE DRAWINGS	L1.1 – L1.5
MAIN LEVEL, PLAN PART A	A1.1A
MAIN LEVEL, PLAN PART B	A1.1B
SECOND LEVEL PLAN	A1.2
THIRD LEVEL PLAN	A1.3
EXTERIOR ELEVATIONS	A3.1
EXTERIOR ELEVATIONS	A3.2

5-58 SITE PLAN REVIEW SET  
 REVISED NOV 14, 2014

Drawn By: MLO  
 Checked By: GAC  
 Scale: -  
 Date: -  
 Professional Seal

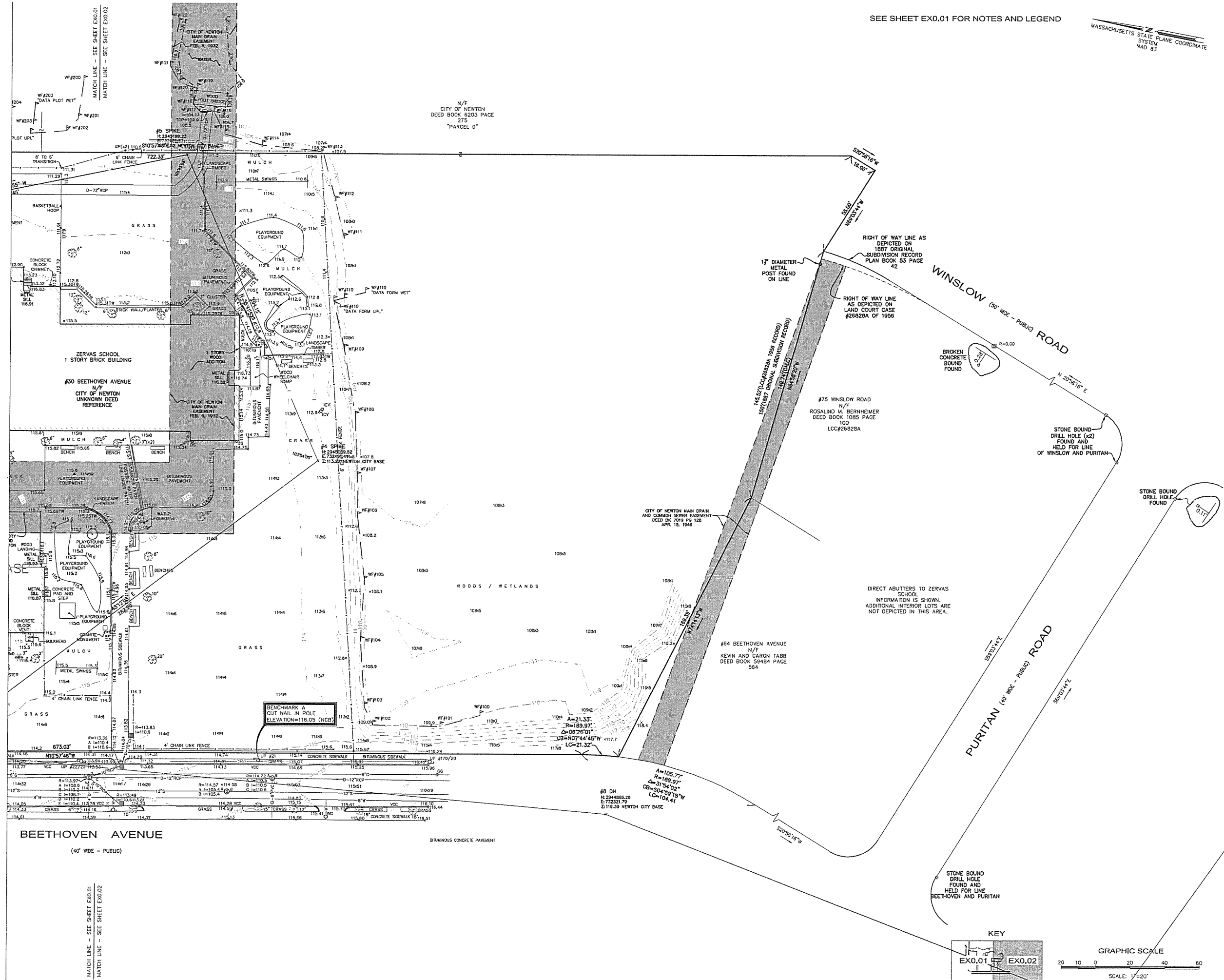
SITE  
 PLAN  
 COVER

C0.0



SEE SHEET EX0.01 FOR NOTES AND LEGEND

MASSACHUSETTS STATE PLANE COORDINATE  
SYSTEM  
NAD 83

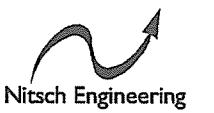


Designpartnership  
OF CAMBRIDGE INC.

ARCHITECTURE  
PROGRAMMING  
MASTER PLANNING  
INTERIOR DESIGN

HOOD BUSINESS PARK  
500 RUTHERFORD AVENUE  
CHARLESTOWN, MA 02129  
T 617.241.9800, F 617.241.5143  
www.tdpc.com

FRANK ZERVAS  
ELEMENTARY  
SCHOOL  
NEWTON, MA



www.nitscheng.com  
2 Center Plaza, Suite 430  
Boston, MA 02108  
T: (617) 338-0063  
F: (617) 338-6472

- Civil Engineering
- Land Surveying
- Transportation Engineering
- Sustainable Site Consulting
- Planning
- GIS

5-58 SITE PLAN REVIEW SET  
REVISED NOV 14, 2014

Drawn By: RCM  
Checked By: -  
Scale: 1"=20'  
Date:  
Professional Seal

EX0.02

GENERAL NOTES

1. TOPOGRAPHIC DATA, PROPERTY LINE INFORMATION, AND EXISTING SITE FEATURES WERE OBTAINED FROM A PLAN ENTITLED "FRANK ZERVAS ELEMENTARY SCHOOL", PREPARED BY NITSCH ENGINEERING, DATED MAY 1, 2014.
2. FLOODPLAIN INFORMATION WAS OBTAINED FROM THE FLOOD INSURANCE RATE MAP (FIRM) COMMUNITY PANEL NO. 25017C0554E. THE SITE IS IN ZONE X.
3. THE LOCATIONS AND ELEVATIONS OF ALL EXISTING UTILITIES SHALL BE CONSIDERED APPROXIMATE AND MUST BE VERIFIED BY THE CONTRACTOR PRIOR TO ANY UTILITY CONNECTIONS OR CROSSINGS OF PROPOSED UTILITIES AND EXISTING UTILITIES. THE CONTRACTOR SHALL CONTACT THE RESPECTIVE UTILITY COMPANIES RELATIVE TO THE LOCATIONS AND ELEVATIONS OF THEIR LINES. THE CONTRACTOR SHALL KEEP A RECORD OF ANY DISCREPANCIES OR CHANGES IN THE LOCATIONS OF ANY UTILITIES SHOWN OR ENCOUNTERED DURING CONSTRUCTION. ANY DISCREPANCIES SHALL BE REPORTED TO NITSCH ENGINEERING.
4. THE CONTRACTOR SHALL COMPLY WITH MASSACHUSETTS GENERAL LAWS CHAPTER 82, SECTION 40, AS AMENDED, WHICH STATES THAT NO ONE MAY EXCAVATE IN THE COMMONWEALTH OF MASSACHUSETTS EXCEPT IN AN EMERGENCY WITHOUT 72 HOURS NOTICE, EXCLUSIVE OF SATURDAYS, SUNDAYS, AND LEGAL HOLIDAYS, TO NATURAL GAS PIPELINE COMPANIES, AND MUNICIPAL UTILITY DEPARTMENTS THAT SUPPLY GAS, ELECTRICITY, TELEPHONE, OR CABLE TELEVISION SERVICE IN OR TO THE CITY OR TOWN WHERE THE EXCAVATION IS TO BE MADE. THE CONTRACTOR SHALL CALL "DIG SAFE" AT 1-888-DIG-SAFE.
5. THE CONTRACTOR SHALL COMPLY WITH MASSACHUSETTS GENERAL LAWS CHAPTER 82A, ALSO REFERRED TO AS JACKIE'S LAW, AS DETAILED IN SECTION 520 CMR 14.00 OF THE CODE OF MASSACHUSETTS REGULATIONS.
6. ALL UTILITY CONNECTIONS ARE SUBJECT TO THE APPROVAL OF, AND GRANTING OF PERMITS BY, THE CITY OF BOSTON. IT SHALL BE THE RESPONSIBILITY OF THE GENERAL CONTRACTOR TO SEE THAT ALL PERMITS AND APPROVALS ARE OBTAINED BEFORE STARTING CONSTRUCTION. THE CONTRACTOR SHALL BE SOLELY RESPONSIBLE FOR MAKING ALL NECESSARY ARRANGEMENTS FOR AND FOR PERFORMING ANY NECESSARY WORK INVOLVED IN CONNECTION WITH THE DISCONTINUANCE OF ANY UTILITIES OR WITHIN THE JURISDICTION OF ANY UTILITY COMPANIES, SUCH AS ELECTRICITY, TELEPHONE, WATER, GAS, AND ANY SYSTEM OR SYSTEMS WHICH WILL BE AFFECTED BY THE WORK TO BE PERFORMED UNDER THIS CONTRACT. THE CONTRACTOR SHALL NOTIFY ALL APPROPRIATE AGENCIES, DEPARTMENTS, AND UTILITY COMPANIES, IN WRITING, AT LEAST 48 HOURS AND NOT MORE THAN 30 DAYS PRIOR TO ANY CONSTRUCTION. CONSTRUCTION SHALL NOT INTERFERE WITH OR INTERRUPT UTILITIES WHICH ARE TO REMAIN IN OPERATION.
7. THE CONTRACTOR SHALL COMPLY WITH ALL APPLICABLE FEDERAL, STATE, AND LOCAL LAWS, RULES, REGULATIONS AND SAFETY CODES IN THE CONSTRUCTION OF ALL IMPROVEMENTS.
8. THE CONTRACTOR SHALL TAKE ADEQUATE PRECAUTIONS TO PROTECT ALL WALKS, GRADING, SIDEWALKS AND SITE DETAILS OUTSIDE OF THE LIMITS OF REGRADEING AND WORK AS SHOWN ON THE DRAWINGS AND SHALL REPAIR AND REPLACE OR OTHERWISE MAKE GOOD AS DIRECTED BY THE ENGINEER OR OWNER'S DESIGNATED REPRESENTATIVE ANY SUCH OR OTHER DAMAGE SO CAUSED.
9. THE CONTRACTOR SHALL REMOVE FROM THE SITE ALL RUBBISH AND DEBRIS FOUND THEREON. STORAGE OF SUCH MATERIALS ON THE PROJECT SITE WILL NOT BE PERMITTED. THE CONTRACTOR SHALL LEAVE THE SITE IN SAFE, CLEAN, AND LEVEL CONDITION UPON COMPLETION OF THE SITE CLEARANCE WORK.
10. THE CONTRACTOR SHALL REMOVE FROM THE AREA OF CONSTRUCTION PAVEMENT, CONCRETE, GRANITE CURBING, CEMENT CURBING, POLES AND FOUNDATIONS, ISLANDS, TREE BERMS AND OTHER FEATURES WITHIN THE LIMITS OF CONSTRUCTION AS REQUIRED TO ACCOMMODATE NEW CONSTRUCTION WHETHER SPECIFIED ON THE DRAWINGS OR NOT.
11. FOR SITE LAYOUT, GRADING, MATERIALS, PLANTINGS, GROUND COVER, EROSION CONTROL, AND DETAILS SEE LANDSCAPE ARCHITECT'S DRAWINGS.
12. FOR STRUCTURAL DETAILS AND INFORMATION SEE STRUCTURAL DRAWINGS.
13. ALL WATER, SEWER, AND DRAIN WORK SHALL BE PERFORMED ACCORDING TO THE REQUIREMENTS AND STANDARD SPECIFICATIONS OF THE CITY OF BOSTON.
14. ELEVATIONS REFER TO NEWTON CITY BASE (NCB) VERTICAL DATUM.
15. GAS, TELEPHONE AND ELECTRIC SERVICES ARE TO BE DESIGNED BY EACH UTILITY COMPANY IN COORDINATION WITH THE MECHANICAL, ELECTRIC AND PLUMBING CONSULTANTS. THE CONTRACTOR SHALL COORDINATE CONSTRUCTION ACTIVITIES AND DESIGN OF NEW UTILITIES WITH ELECTRIC, CABLE TELEVISION AND TELECOMMUNICATION UTILITIES.
16. INSTALL WATER LINES WITH A MINIMUM OF FIVE FEET OF COVER AND A MAXIMUM OF SEVEN FEET.
17. MAINTAIN 10 FEET HORIZONTAL SEPARATION AND 18" VERTICAL SEPARATION (WATER OVER SEWER) BETWEEN SEWER AND WATER LINES. WHEREVER THERE IS LESS THAN 10 FEET OF HORIZONTAL SEPARATION AND 18" OF VERTICAL SEPARATION BETWEEN A PROPOSED OR EXISTING SEWER LINE TO REMAIN AND A PROPOSED OR EXISTING WATER LINE TO REMAIN BOTH WATER MAIN AND SEWER MAIN SHALL BE CONSTRUCTED OF MECHANICAL JOINT CEMENT LINED DUCTILE IRON PIPE FOR A DISTANCE OF 10- FEET ON EITHER SIDE OF THE CROSSING. ONE (1) FULL LENGTH OF WATER PIPE SHALL BE CENTERED OVER THE SEWER AT THE CROSSING.
18. UTILITY STRUCTURES TO BE ABANDONED SHALL BE REMOVED TO A DEPTH OF NO LESS THAN 3 FEET BELOW FINISHED GRADE. THE BOTTOMS OF THE STRUCTURES SHALL BE BROKEN AND THE STRUCTURES SHALL BE BACKFILLED WITH GRAVEL BORROW AND COMPACTED.
19. CONTRACTOR SHALL MAINTAIN ALL EXISTING UTILITIES EXCEPT THOSE NOTED TO BE ABANDONED OR REMOVED & DISPOSED.
20. THE GENERAL CONTRACTOR IS RESPONSIBLE FOR TRENCHING, BACKFILLING, AND SURFACE RESTORATION FOR THE GAS LINE INSTALLATION.
21. ALL GRATES IN WALKWAYS SHALL BE ADA COMPLIANT.

SEDIMENTATION AND EROSION CONTROL NOTES:

1. ALL EROSION AND SEDIMENT CONTROL MEASURES ARE TO BE CONSTRUCTED AND MAINTAINED IN ACCORDANCE WITH PUBLISHED EROSION CONTROL AND SEDIMENT GUIDELINES FOR MASSACHUSETTS (SEE REFERENCE BELOW, NOTE #6).
2. SEDIMENT CONTROL MEASURES SHALL BE ADJUSTED TO MEET FIELD CONDITIONS AT THE TIME OF AND DURING ALL PHASES OF CONSTRUCTION AND BE CONSTRUCTED PRIOR TO AND IMMEDIATELY AFTER ANY GRADING OR DISTURBANCE OF EXISTING SURFACE MATERIAL ON THE SITE.
3. PERIODIC INSPECTION AND MAINTENANCE OF ALL SEDIMENT CONTROL STRUCTURES SHALL BE PROVIDED TO INSURE THAT THE INTENDED PURPOSE IS ACCOMPLISHED. THE CONTRACTOR SHALL BE RESPONSIBLE FOR ALL SEDIMENT LEAVING THE LIMIT OF WORK. SEDIMENT CONTROL MEASURES SHALL BE IN WORKING CONDITION AT THE END OF EACH WORKING DAY.
4. ALL POINTS OF CONSTRUCTION INGRESS OR EGRESS WILL BE PROTECTED TO PREVENT TRACKING OF MUD ONTO PUBLIC WAYS.
5. ALL SEDIMENT WILL BE PREVENTED FROM ENTERING ANY STORM DRAINAGE SYSTEM (I.E. THROUGH THE USE OF HAY BALES, CATCH BASIN SEDIMENT TRAPS, GRAVEL, BOARDS OR OTHER APPLICABLE METHODS).
6. THE CONTRACTOR INSTALLING THE ABOVE SHALL OBTAIN AND FOLLOW THE "MASSACHUSETTS EROSION AND SEDIMENT CONTROL GUIDELINES FOR URBAN AND SUBURBAN AREAS" PREPARED BY DEPARTMENT OF ENVIRONMENTAL PROTECTION, BUREAU OF RESOURCE PROTECTION, DATED MAY 1997, REPRINTED MAY 2003 (OR LATEST EDITION), AND THE 2008 NPDES GENERAL PERMIT FOR STORMWATER DISCHARGES FROM CONSTRUCTION ACTIVITIES, OR LATEST EDITION.
7. ALL DRAINAGE SWALES AND GROUND SURFACES WITHIN THE LIMIT OF WORK SHALL BE PROTECTED.
8. AFTER ANY SIGNIFICANT RAINFALL, SEDIMENT CONTROL STRUCTURES SHALL BE INSPECTED FOR INTEGRITY. ANY DAMAGED DEVICES SHALL BE CORRECTED IMMEDIATELY.
9. ALL STOCK PILES SHALL BE PROTECTED AND LOCATED AWAY FROM EXISTING WATER BODIES & WITHIN THE LIMIT OF WORK.
10. ANY SEDIMENT TRACKED ONTO PAVED AREAS SHALL BE SWEEPED AT THE END OF EACH WORKING DAY.
11. ALL DEBRIS GENERATED DURING SITE PREPARATION ACTIVITIES SHALL BE LEGALLY DISPOSED OF OFF-SITE.
12. ALL TOPSOIL ENCOUNTERED WITHIN THE WORK AREA SHALL BE STRIPPED TO ITS FULL DEPTH AND STOCKPILED FOR REUSE. EXCESS TOPSOIL SHALL BECOME THE PROPERTY OF THE OWNER AND SHALL BE STOCKPILED AS DIRECTED BY THE OWNER. TOPSOIL PILES SHALL REMAIN SEGREGATED FROM EXCAVATED SUBSURFACE SOIL MATERIALS.
13. TEMPORARY DIVERSION DITCHES, PERMANENT DITCHES, CHANNELS, EMBANKMENTS AND ANY DENUDED SURFACE WHICH WILL BE EXPOSED FOR A PERIOD OF 14 CALENDAR DAYS OR MORE SHALL BE CONSIDERED CRITICAL VEGETATION AREAS. THESE AREAS SHALL BE MULCHED WITH STRAW. MULCH SHALL BE SPREAD UNIFORMLY IN A CONTINUOUS BLANKET OF SUFFICIENT THICKNESS TO COMPLETELY HIDE THE SOIL FROM VIEW.
14. AN EROSION CONTROL BARRIER SHALL BE INSTALLED ALONG THE EDGE OF PROPOSED DEVELOPMENT AS INDICATED IN THE PLAN PRIOR TO COMMENCEMENT OF DEMOLITION OR CONSTRUCTION OPERATIONS.
15. THE CONTRACTOR IS RESPONSIBLE FOR REMOVAL OF ALL EROSION AND SEDIMENT CONTROLS AT THE COMPLETION OF SITE CONSTRUCTION.
16. MEANS OF EROSION AND SEDIMENT PROTECTION AS NOTED ON THE DRAWINGS INDICATE THE MINIMUM PROVISIONS NECESSARY. ADDITIONAL MEANS OF PROTECTION SHALL BE PROVIDED BY THE CONTRACTOR AS REQUIRED FOR CONTINUED OR UNFORESEEN EROSION PROBLEMS, AT NO ADDITIONAL EXPENSE TO THE OWNER.
17. THE CONTRACTOR SHALL USE TEMPORARY SEEDING, MULCHING OR OTHER APPROVED STABILIZATION MEASURES TO PROTECT EXPOSED AREAS DURING PROLONGED CONSTRUCTION OR OTHER LAND DISTURBANCE. STOCKPILES THAT WILL BE EXPOSED FOR LONGER THAN 15 DAYS SHALL BE SEEDD WITH AN ANNUAL RYE.
18. ALL STOCKPILED MATERIALS SHALL BE LOCATED AT LEAST 100- FEET FROM THE WETLANDS. EXCESS EXCAVATED MATERIALS SHALL BE REMOVED FROM THE SITE AND PROPERLY DISPOSED OF WITHIN 20 DAYS AFTER EXCAVATION.

LEGEND

⊙ DMH	DRAIN MANHOLE
⊙ CB	CATCH BASIN
⊙ AD	AREA DRAIN
⊙ SMH	SEWER MANHOLE
⊙ UP	UTILITY POLE
⊙ LP	STREET LIGHT POLE
⊙ EHH	ELECTRIC HANDHOLE
⊙ WF	WATER FOUNTAIN
⊙ WV	WATER VALVE
⊙ WQS	WATER QUALITY UNIT
// // //	ABANDON UTILITY LINE
—C—C—	CABLE TELEVISION LINE
—D—D—	DRAIN LINE
—E—E—	UNDERGROUND ELECTRIC LINE
—G—G—	GAS LINE
—S—S—	SEWER LINE
—T—T—	TELEPHONE/DATA LINE
—W—W—	WATER LINE
—OHW—OHW—	OVERHEAD WIRES
—TS—TS—	TRAFFIC SIGNAL LINE
—X—X—	EDGE OF TREES
—X—X—	CHAIN LINK FENCE
—X—X—	STONE WALL
—X—X—	CUT & CAP UTILITY LINE
+ TW: 147.50 B.M. 137.50	TOP OF WALL ELEVATION
+149.55	BOTTOM OF WALL ELEVATION
⊙	SPOT ELEVATION
⊙	TEST BORING

ABBREVIATIONS

AD	AREA DRAIN
BC	BOTTOM OF CURB
BG	BOTTOM OF STEEL GIRDER
BLDG.	BUILDING
BW	BOTTOM OF WALL
BWW	BOSTON WATER WORKS GATE
CATV	CABLE TELEVISION
CB	CATCH BASIN
CI	CAST IRON PIPE
CLDI	CEMENT LINE DUCTILE IRON PIPE
CLF	CHAIN LINK FENCE
CMP	CORRUGATED METAL PIPE
CONC.	CONCRETE
CPP	CORRUGATED PLASTIC PIPE
CSMH	COMBINED SEWER MANHOLE
DIP	DUCTILE IRON PIPE
DMH	DRAINAGE MANHOLE
EHH	ELECTRIC HANDHOLE
EMH	ELECTRIC MANHOLE
FS	FIRE SERVICE
GG	GAS GATE
GV	GAS VALVE
HP	HORSEPOWER
HYD	HYDRANT
I	INVERT ELEVATION
LF	LINEAR FEET
LOC.	LOCATION
LP	STREET LIGHT POLE
OHW	OVERHEAD WIRE
PCC	PRECAST CONCRETE CURB
PVC	POLYVINYL CHLORIDE PIPE
R	RIM ELEVATION
RCF	REINFORCED CONCRETE PIPE
REC.	RECORD
SH	SPRINKLER HEAD
SMH	SEWER MANHOLE
TC	TOP OF CURB
TG	TOP OF STEEL GIRDER
TMH	TELEPHONE MANHOLE
TR	TOP OF RAIL ELEVATION
TW	TOP OF WALL
TYP.	TYPICAL
UP	UTILITY POLE
VCP	VITRIFIED CLAY PIPE
VGC	VERTICAL GRANITE CURB
WG	WATER GATE
WV	WATER VALVE
W/	WITH
W/O	WITHOUT

Designpartnership  
OF CAMBRIDGE INC

ARCHITECTURE  
PROGRAMMING  
MASTER PLANNING  
INTERIOR DESIGN

HOOD BUSINESS PARK

500 RUTHERFORD AVENUE

CHARLESTOWN, MA 02129

T 617.241.9800, F 617.241.5143

www.tdpc.com

ZERVAS  
ELEMENTARY  
SCHOOL

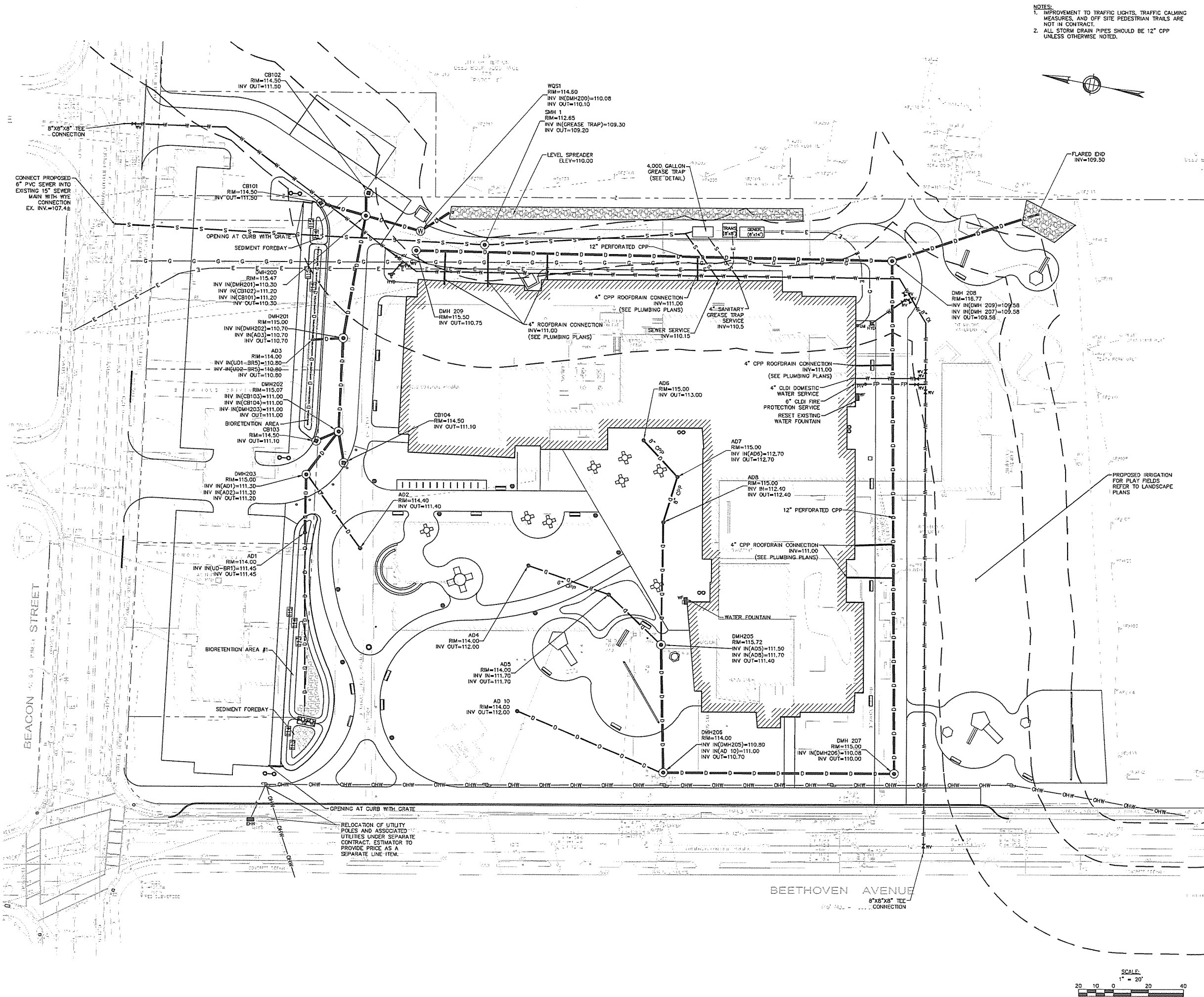
NEWTON, MA

5-58 SITE PLAN REVIEW SET  
REVISED NOV 14, 2014

Drawn By: MLD  
Checked By: OJC  
Scale: 1"=20'  
Date: 10.28.14  
Professional Seal

CIVIL  
NOTES AND  
LEGEND

CO.1



**Designpartnership**  
OF CAMBRIDGE INC

ARCHITECTURE  
PROGRAMMING  
MASTER PLANNING  
INTERIOR DESIGN

HOOD BUSINESS PARK  
500 RUTHERFORD AVENUE  
CHARLESTOWN, MA 02129  
T 617.241.9800, F 617.241.5143  
www.tdpc.com

**ZERVAS  
ELEMENTARY  
SCHOOL**

**NEWTON, MA**

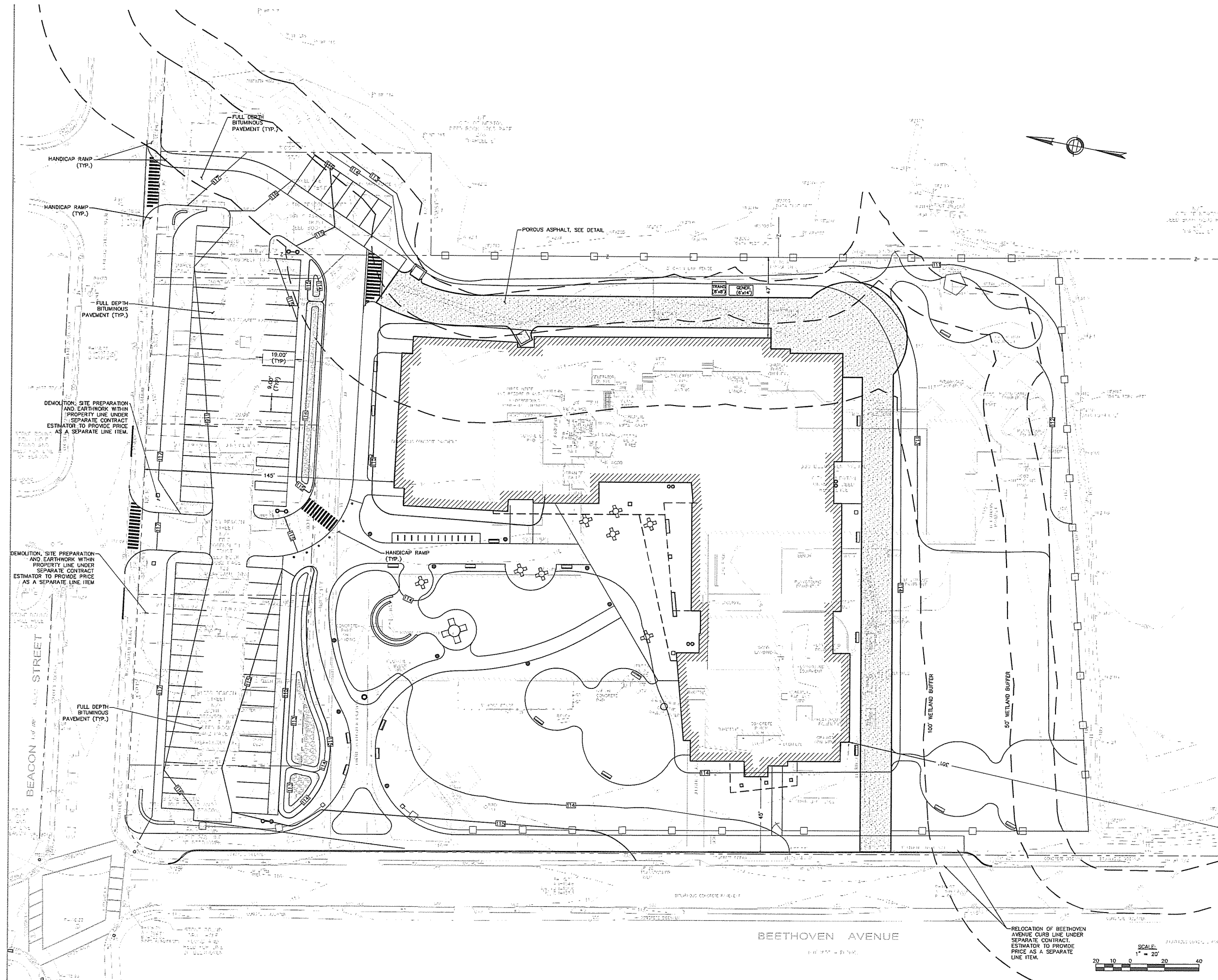
5-58 SITE PLAN REVIEW SET  
REVISED NOV 14, 2014

Drawn By: MJD  
Checked By: CMC  
Scale: 1"=20'  
Date: 11.14.2014  
Professional Seal

**SITE UTILITY  
PLAN**

C1.0





**Designpartnership**  
OF CAMBRIDGE INC

ARCHITECTURE  
PROGRAMMING  
MASTER PLANNING  
INTERIOR DESIGN

HOOD BUSINESS PARK  
500 RUTHERFORD AVENUE  
CHARLESTOWN, MA 02129  
T 617.241.9800, F 617.241.5143  
www.tdpc.com

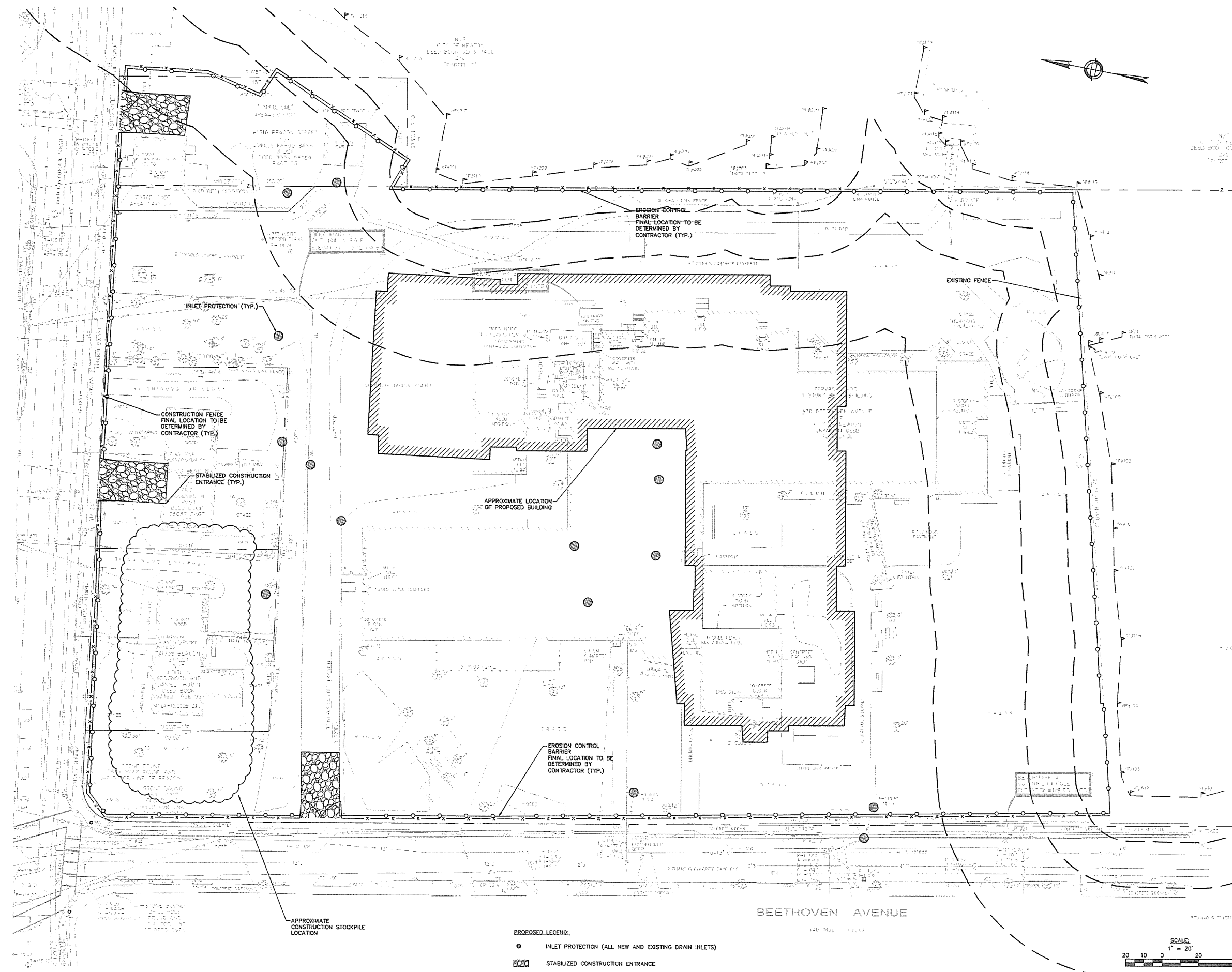
**ZERVAS  
ELEMENTARY  
SCHOOL**  
**NEWTON, MA**

5-58 SITE PLAN REVIEW SET  
REVISED NOV 14, 2014

Drawn By: M.D.  
Checked By: G.D.  
Scale: 1"=20'  
Date: 10.28.14  
Professional Seal

**SITE LAYOUT,  
GRADING, AND  
MATERIALS PLAN**

C1.1



- PROPOSED LEGEND:**
- INLET PROTECTION (ALL NEW AND EXISTING DRAIN INLETS)
  - ▨ STABILIZED CONSTRUCTION ENTRANCE
  - x— CONSTRUCTION FENCE
  - x— EROSION CONTROL BARRIER

**ZERVAS  
ELEMENTARY  
SCHOOL**

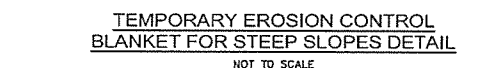
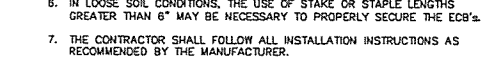
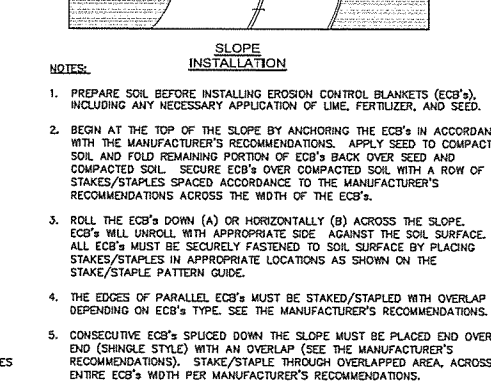
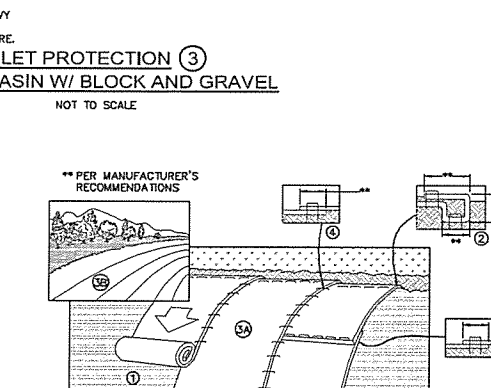
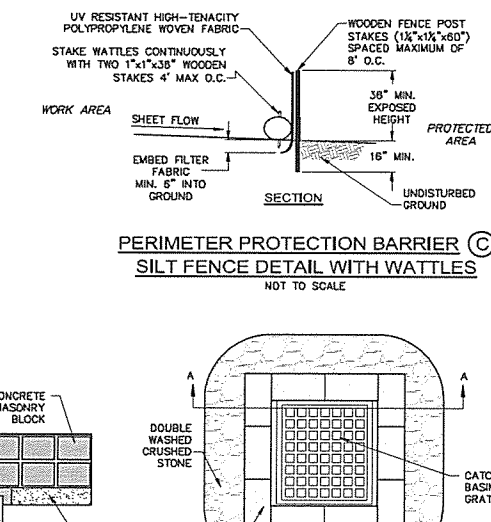
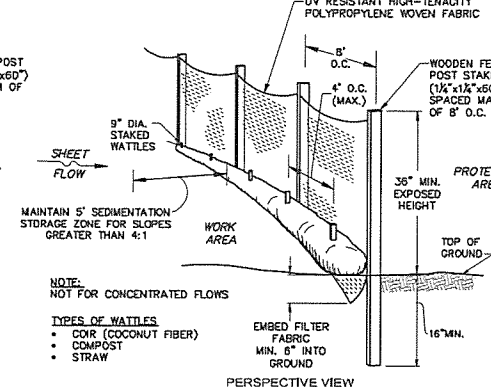
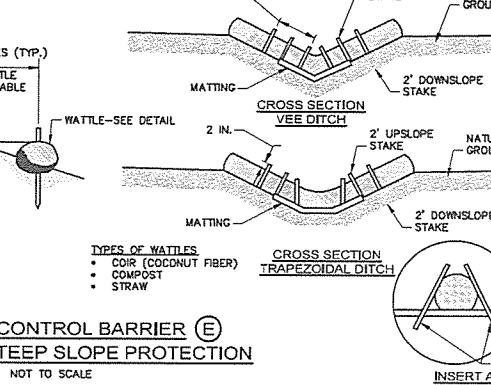
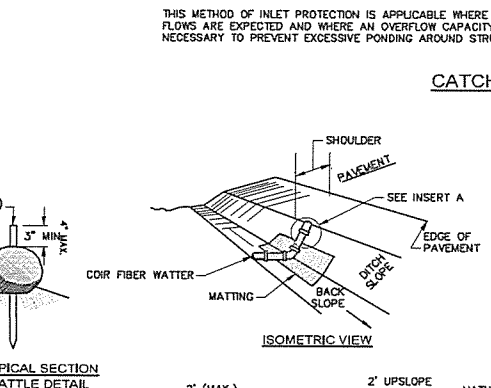
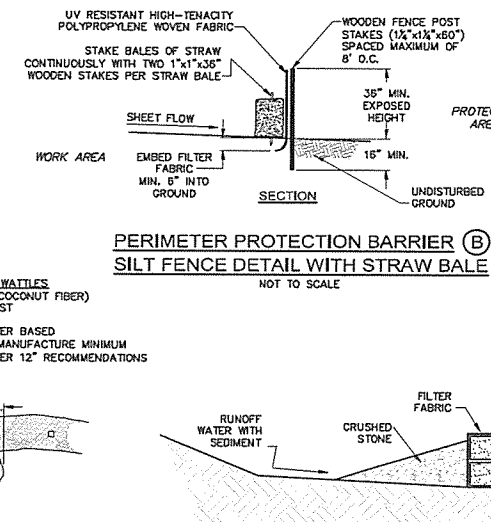
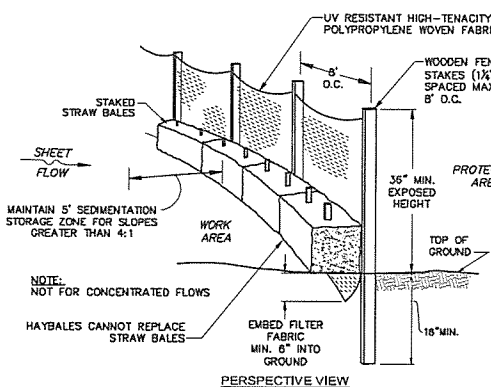
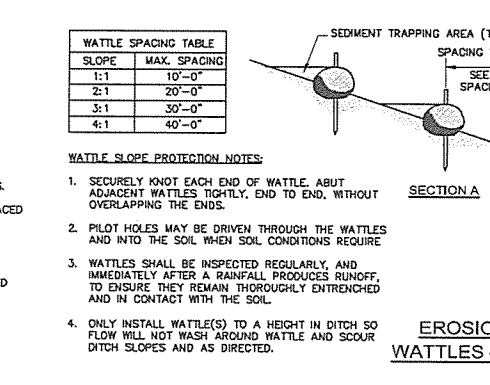
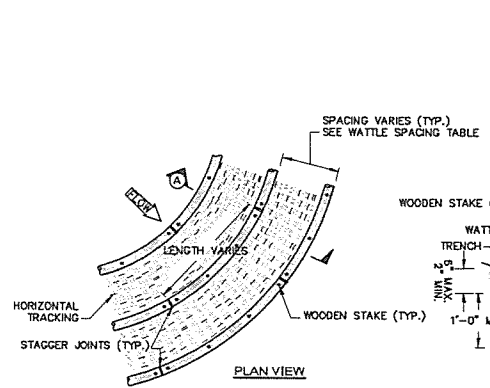
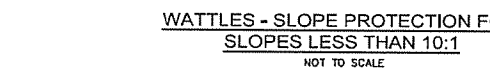
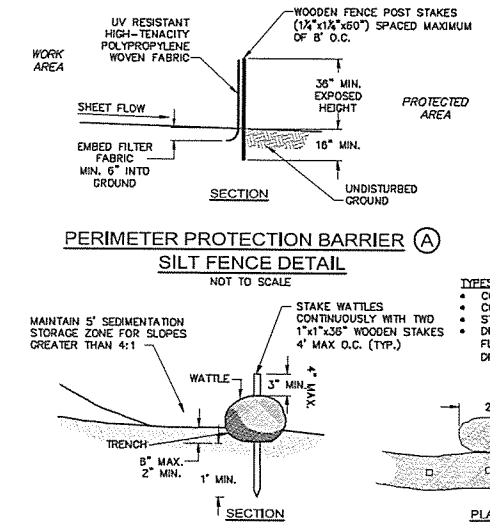
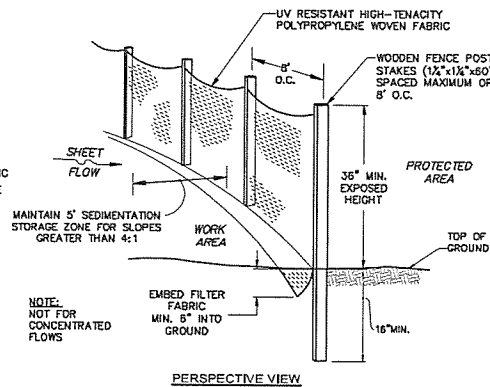
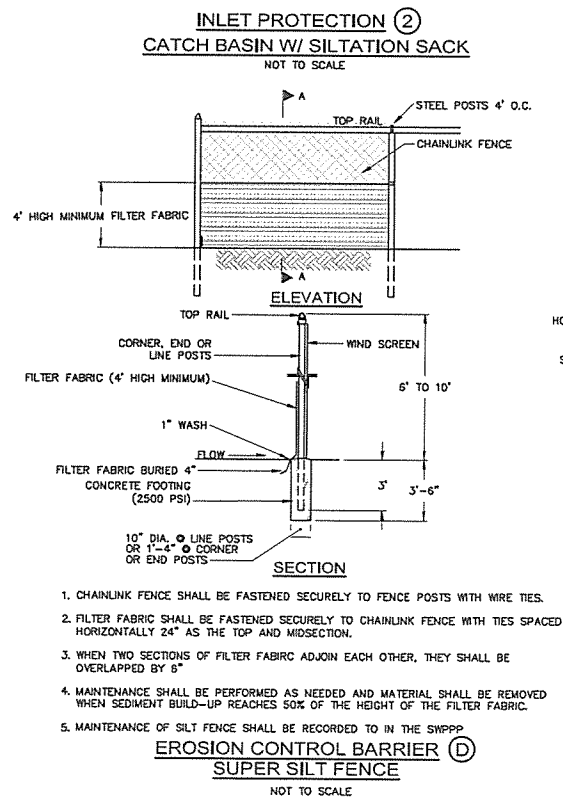
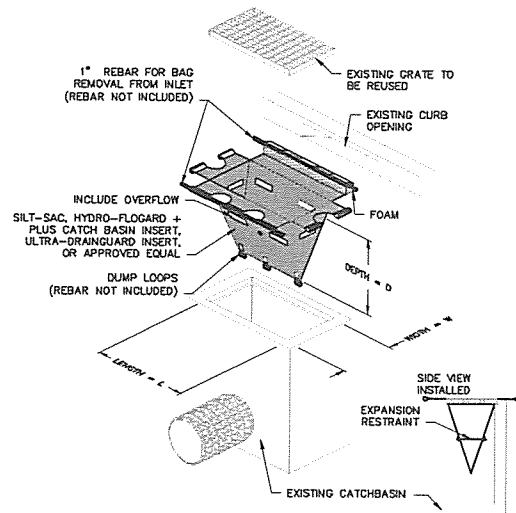
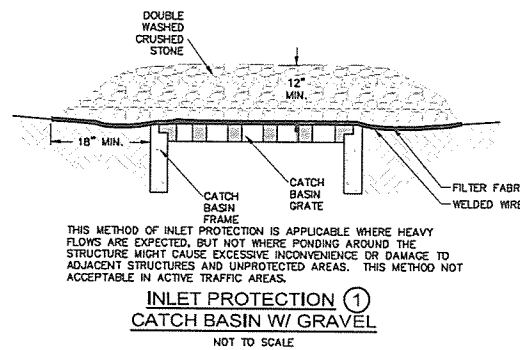
**NEWTON, MA**

5-58 SITE PLAN REVIEW SET  
REVISED NOV 14, 2014

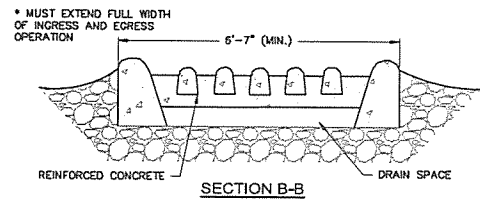
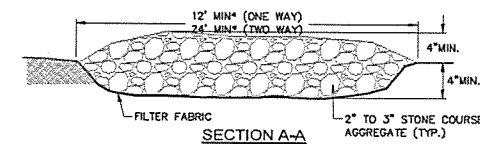
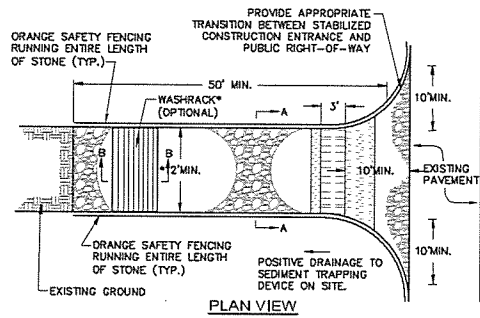
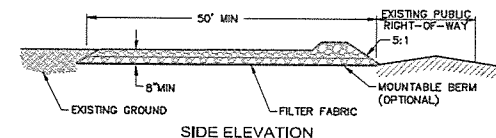
Drawn By: BAV  
Checked By: CRO  
Scale: 1"=20'  
Date: 11.14.14  
Professional Seal

**EROSION AND  
SEDIMENTATION  
CONTROL PLAN**

C2.0

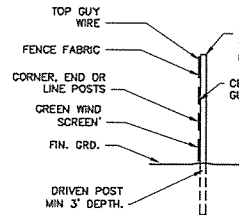
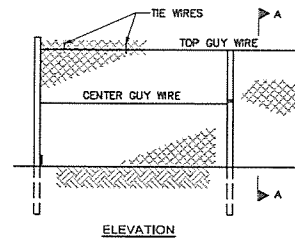
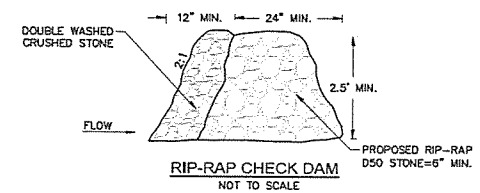
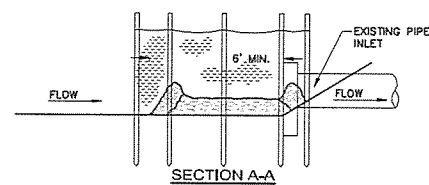
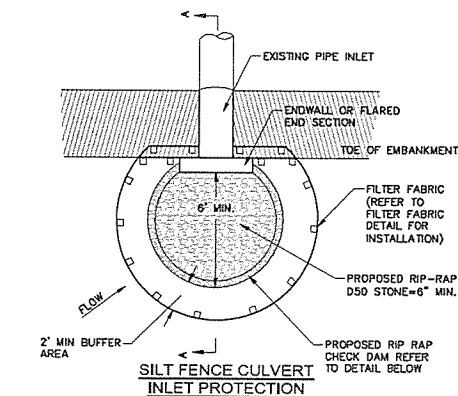






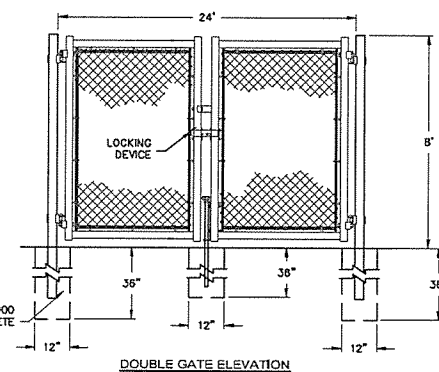
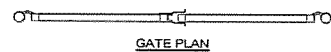
- CONSTRUCTION SPECIFICATIONS**
1. STONE SIZE - USE 2" TO 3" STONE.
  2. LENGTH - GREATER THAN OR EQUAL TO 50 FEET
  3. THICKNESS - 8"
  4. WIDTH - TWELVE FOOT MINIMUM (ONE WAY), TWENTY FOUR FOOT MINIMUM (TWO WAY), BUT NOT LESS THAN THE FULL WIDTH AT POINTS WHERE INGRESS OR EGRESS OCCURS.
  5. SURFACE WATER - ALL SURFACE WATER FLOWING OR DIVERTED TOWARD CONSTRUCTION ENTRANCES SHALL BE PIPED ACROSS THE ENTRANCE. IF PIPING IS IMPRACTICAL, A MOUNTABLE BERM SHALL BE PERMITTED.
  6. MAINTENANCE - THE ENTRANCE SHALL BE MAINTAINED IN A CONDITION WHICH SHALL PREVENT TRACKING OR FLOWING OF SEDIMENT ONTO PUBLIC RIGHTS-OF-WAY. THIS MAY REQUIRE PERIODIC TOP DRESSING WITH ADDITIONAL STONE AS CONDITIONS DEMAND AND REPAIR OR CLEANOUT OF ANY MEASURES USED TO TRAP SEDIMENT. ALL SEDIMENT SPILLED, DROPPED, WASHED OR TRACKED ONTO PUBLIC RIGHTS-OF-WAY MUST BE REMOVED IMMEDIATELY.
  7. PERIODIC INSPECTION AND NEEDED MAINTENANCE SHALL BE PROVIDED.

**STABILIZED CONSTRUCTION ENTRANCE**  
NOT TO SCALE

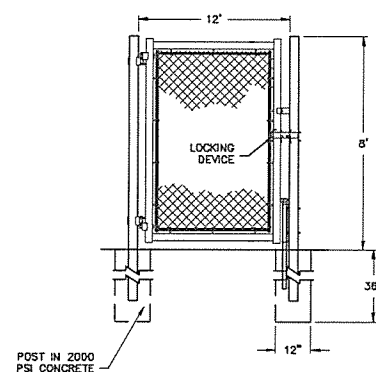
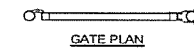


**CHAIN LINK CONSTRUCTION FENCE**  
NOT TO SCALE

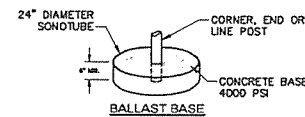
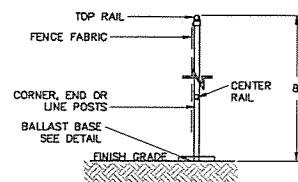
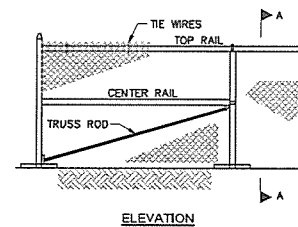
- CONSTRUCTION FENCE AND GATE NOTES**
1. FABRIC SHALL BE 0.148" WIRE, WOVEN INTO APPROXIMATELY 2" DIAMOND MESH.
  2. THE FENCE FABRIC SHALL BE ZINC COATED STEEL OR ALUMINUM COATED STEEL.
  3. FENCE POSTS SHALL RECEIVE THE SAME COATING AND TREATMENT AS THE FENCE FABRIC (DESCRIBED ABOVE).
  4. THE CONTRACTOR SHALL ADD A GREEN WIND SCREEN
  5. LINE POSTS SHALL BE 2 1/2" O.D. END OR CORNER POSTS SHALL BE 3" O.D.
  6. THE CONTRACTOR IS RESPONSIBLE FOR SURFACE RESTORATION ONCE THE FENCE IS REMOVED.
  7. THE CONTRACTOR SHALL REMOVE AND DISPOSE OF THE TEMPORARY CONSTRUCTION FENCE AT THE CONCLUSION OF THE PROJECT.



**24' WIDE DOUBLE GATE**  
NOT TO SCALE



**12' WIDE EMERGENCY GATE**  
NOT TO SCALE



**TEMPORARY CONSTRUCTION CHAIN LINK FENCE WITH BALLAST BASE**  
NOT TO SCALE

- NOTES**
1. END, GATE AND CORNER POSTS SHALL BE BRACED TO ADJACENT LINE POSTS. (MORE THAN 30' CHANGE IN DIRECTION CONSTITUTES A CORNER)
  2. FABRIC SHALL BE 0.148" GAUGE MIN. WIRE, WOVEN INTO APPROXIMATELY 2" DIAMOND MESH.
  3. ZINC-COATED STEEL FABRIC BASE METAL SHALL BE COATED WITH PRIME WESTERN SPECTER OR EQUAL.
  4. ALUMINUM COATED STEEL FABRIC BASE METAL SHALL BE COATED WITH ALUMINUM ALLOY.
  5. LINE POSTS SHALL BE 2 1/2" O.D. END OR CORNER POSTS SHALL BE 3" O.D.
  6. THE CONTRACTOR IS RESPONSIBLE FOR SURFACE RESTORATION ONCE THE FENCE IS REMOVED.
  7. THE CONTRACTOR SHALL REMOVE AND DISPOSE OF THE TEMPORARY CONSTRUCTION FENCE AT THE CONCLUSION OF THE PROJECT.

**Designpartnership**  
OF CAMBRIDGE INC

ARCHITECTURE  
PROGRAMMING  
MASTER PLANNING  
INTERIOR DESIGN

HOOD BUSINESS PARK  
500 RUTHERFORD AVENUE  
CHARLESTOWN, MA 02129  
T 617.241.9800, F 617.241.5143  
WWW.TDPC.COM

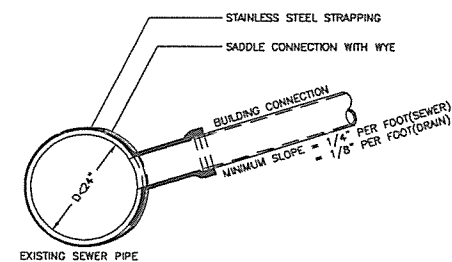
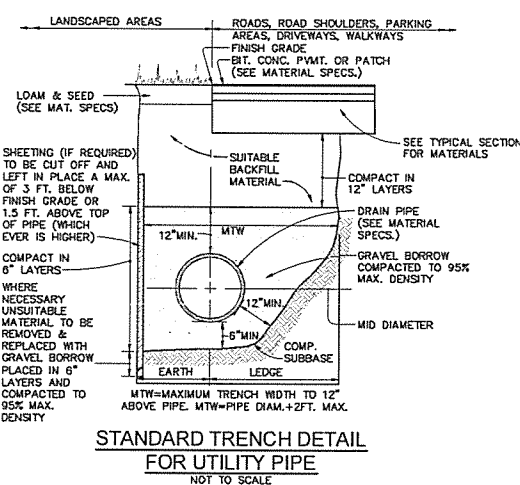
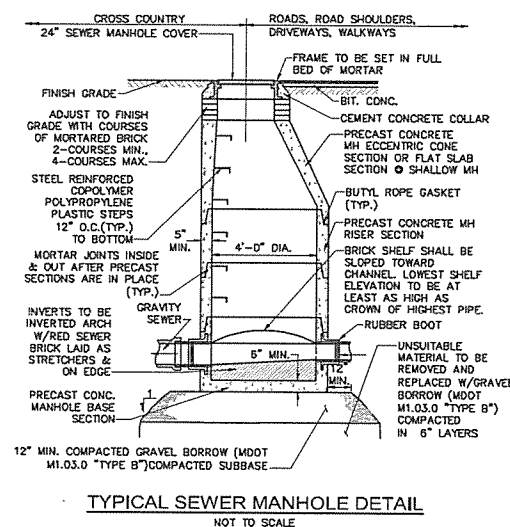
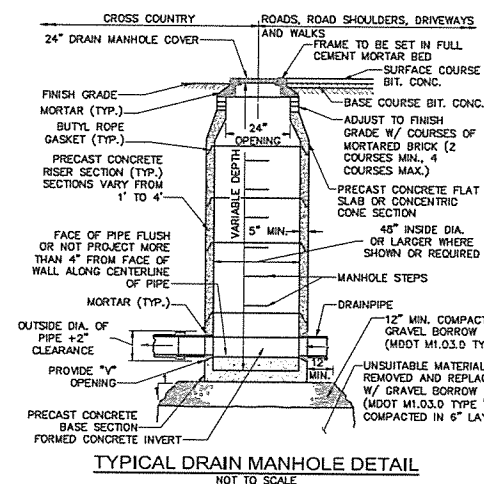
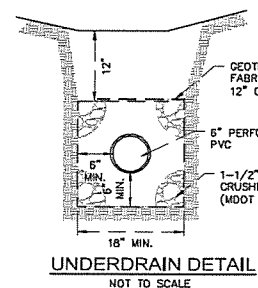
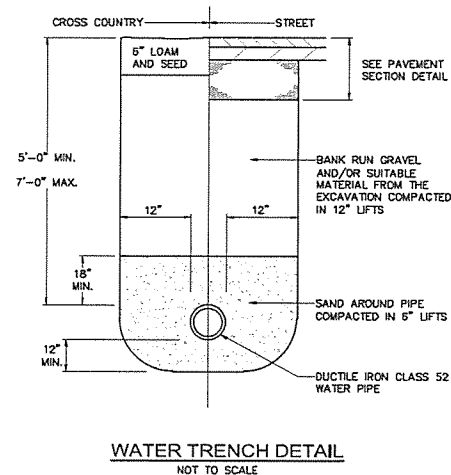
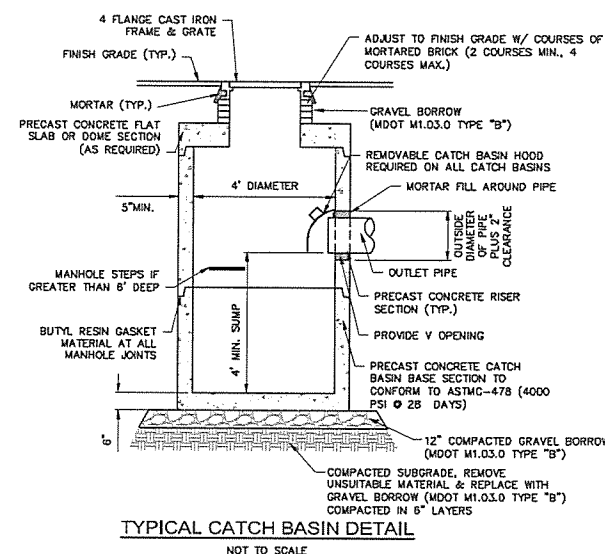
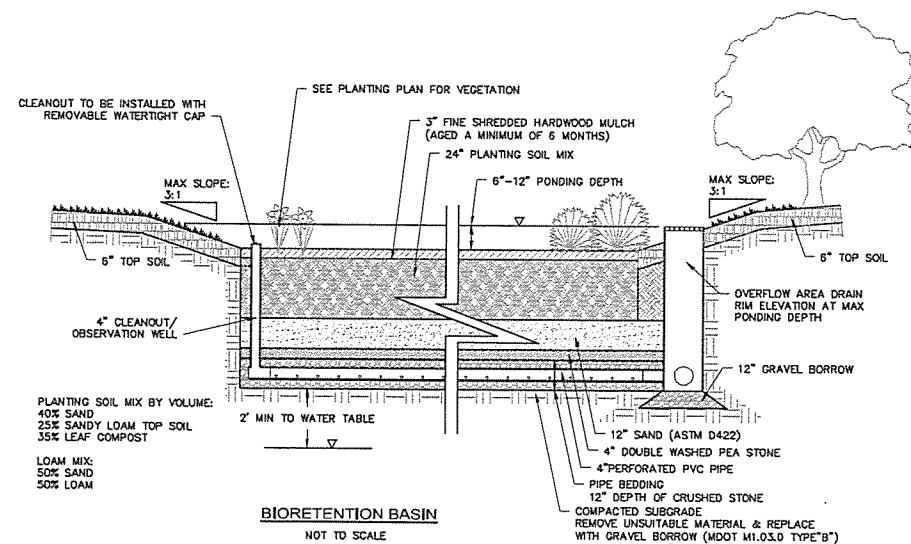
**ZERVAS  
ELEMENTARY  
SCHOOL**  
NEWTON, MA

5-58 SITE PLAN REVIEW SET  
REVISED NOV 14, 2014

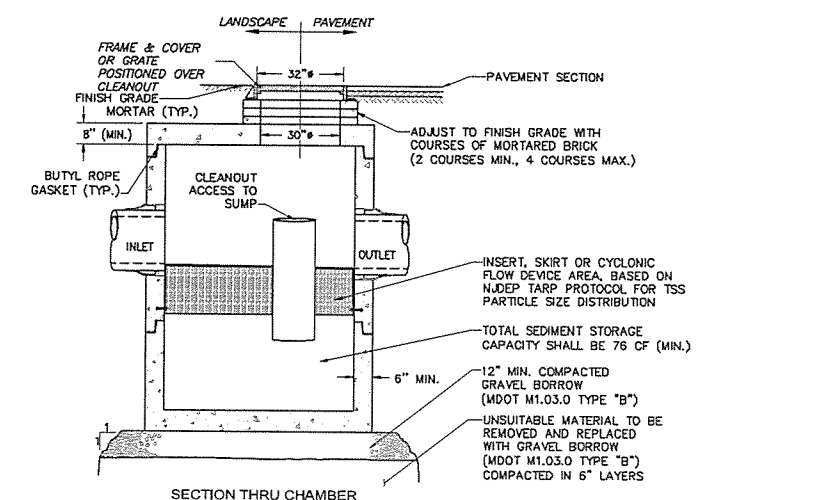
Drawn By: MLO  
Checked By: CJC  
Scale: 1"=20'  
Date: 10.28.14  
Professional Seal

**EROSION AND  
SEDIMENTATION  
CONTROL DETAILS**

C3.1



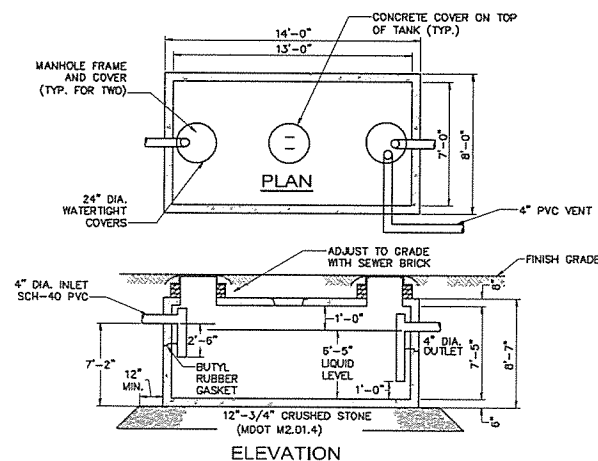
- NOTES:
1. FULL PVC OR IRON SADDLE MAY BE USED TO CONNECT TO EXISTING PVC, CLAY, CONCRETE, OR IRON PIPE.
  2. SADDLES MUST HAVE RUBBER GASKETS AND SHALL BE TIGHTENED WITH STRAPS. SADDLES WILL NOT BE CEMENTED ONTO THE PIPE.
  3. FULL WYE CONNECTION FITTINGS MAY BE USED.
  4. PIPE SHALL BE CUT TO CONFORM TO THE OPENING IN THE SADDLE.
  5. CONNECTIONS DIRECTLY INTO THE EXISTING PIPE WITHOUT A SADDLE OR A FULL WYE FITTING ARE NOT ALLOWED.



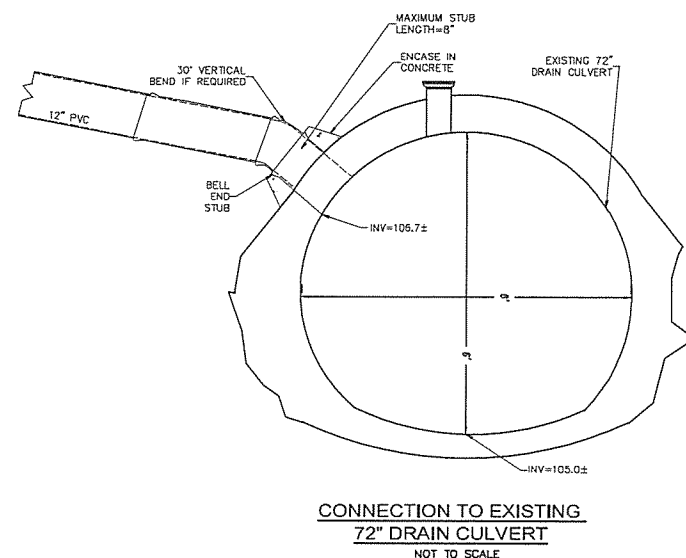
STRUCTURE NAME	MINIMUM WQF	PEAK FLOW RATE*	MINIMUM SEDIMENT STORAGE CAPACITY
WQS#1	0.54 CFS	8.07 CFS	76 CF

- | NOTE: |  | STRUCTURE NAME | MINIMUM WQF | PEAK FLOW |
|-------|--|----------------|-------------|-----------|
| 1.    | THE USE OF FLEXIBLE CONNECTIONS IS RECOMMENDED AT THE INLET AND OUTLET WHERE APPLICABLE. | WQS#1          | 0.54 CFS    | 8.07 CFS  |
| 2.    | THE COVER SHOULD BE POSITIONED OVER THE OUTLET DROP PIPE AND THE OIL CLEANOUT PIPE.      |                |             |           |
| 3.    | STRUCTURE DESIGNED FOR H2O LOADING   |                |             |           |

WATER QUALITY STRUCTURE DETAIL  
NOT TO SCALE



- SPECIFICATIONS:**
1. CONCRETE MINIMUM STRENGTH - 5,000 PSI @ 28 DAYS
  2. STEEL REINFORCEMENT - ASTM A615 GR. 60, A185 OR A497 - 1" MIN. COVER
  3. DESIGN LOADING - HS20-44 - EARTH COVER 0 TO 5 FEET
  4. WATER TABLE - 0 FEET
  5. CONSTRUCTION JOINT - SEALED WITH 1" DIA. BUTYL RUBBER OR EQUIVALENT
  6. TOTAL CAPACITY - 4,000 GALLONS



Designpartnership  
OF CAMBRIDGE INC.

HOOD BUSINESS PARK  
500 RUTHERFORD AVENUE  
-CHARLESTOWN, MA 02129  
T 617.241.9800, F 617.241.5143  
www.tdpc.com

HOOD BUSINESS PARK  
600 RUTHERFORD AVENUE  
CHARLESTOWN, MA 02129  
T 617.241.9800, F 617.241.5143  
[www.tdpc.com](http://www.tdpc.com)

ZERVAS  
ELEMENTARY  
SCHOOL  

---

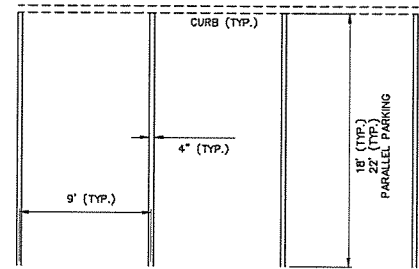
NEWTON, MA

5-58 SITE PLAN REVIEW SET  
REVISED NOV 14, 2014

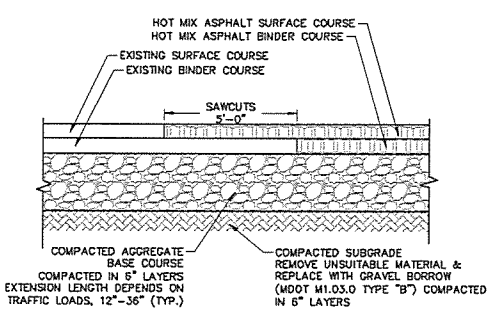
Drawn By MLD  
Checked By CRC  
Scale: 1"=20'  
Date: 10.28.14  
Professional Seal

## CIVIL DETAILS

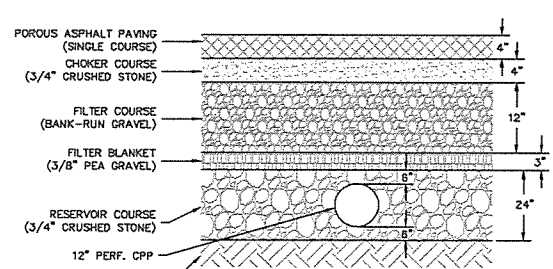
C3.2



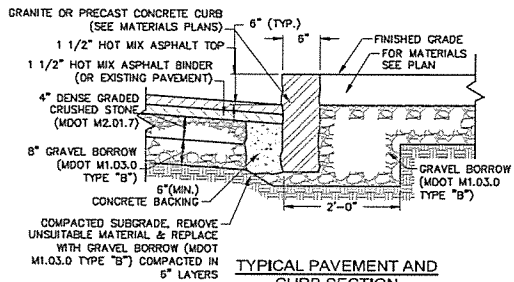
TYPICAL PARKING STRIPING DETAIL  
NOT TO SCALE



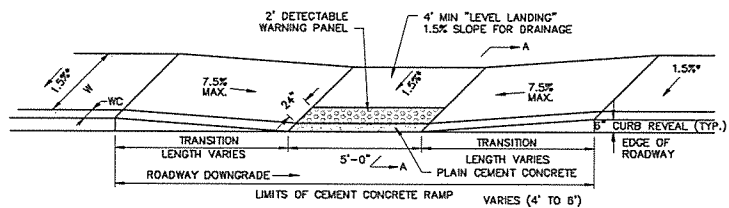
PAVEMENT MATCHING DETAIL  
NOT TO SCALE



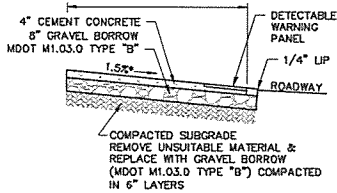
TYPICAL POROUS ASPHALT SECTION DETAIL  
NOT TO SCALE



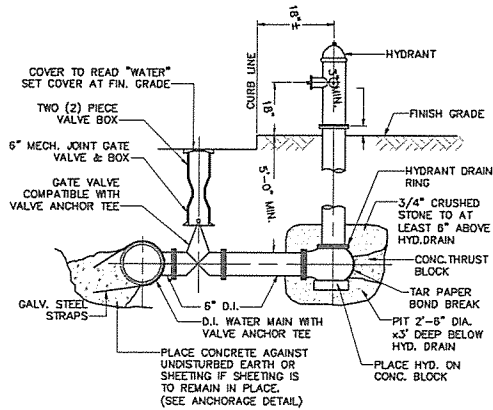
TYPICAL PAVEMENT AND CURB SECTION  
NOT TO SCALE



LEGEND  
W = SIDEWALK WIDTH (VARIES 4' TO 6')  
Wc = CURB WIDTH (VARIES 0' TO 6')  
± = TOLERANCE FOR CONSTRUCTION (± 0.5%)



SECTION A-A  
PEDESTRIAN RAMP DETAIL  
(4' TO 6' WIDE)  
NOT TO SCALE



NOTE: ALL JOINTS ON HYDRANT BRANCH TO BE RESTRAINED JOINTS  
FIRE HYDRANT DETAIL  
NOT TO SCALE

**Designpartnership**  
OF CAMBRIDGE INC

ARCHITECTURE  
PROGRAMMING  
MASTER PLANNING  
INTERIOR DESIGN

HOOD BUSINESS PARK  
500 RUTHERFORD AVENUE  
CHARLESTOWN, MA 02129  
T 617.241.9800, F 617.241.5143  
WWW.TDPC.COM

ZERVAS  
ELEMENTARY  
SCHOOL  
NEWTON, MA

5-58 SITE PLAN REVIEW SET  
REVISED NOV 14, 2014

Drawn By: MLD  
Checked By: GDB  
Scale: 1"=20'  
Date: 10.28.14  
Professional Seal

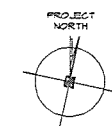
CIVIL  
DETAILS II

C3.3

ZERVAS  
ELEMENTARY  
SCHOOL  
WABAN, MA

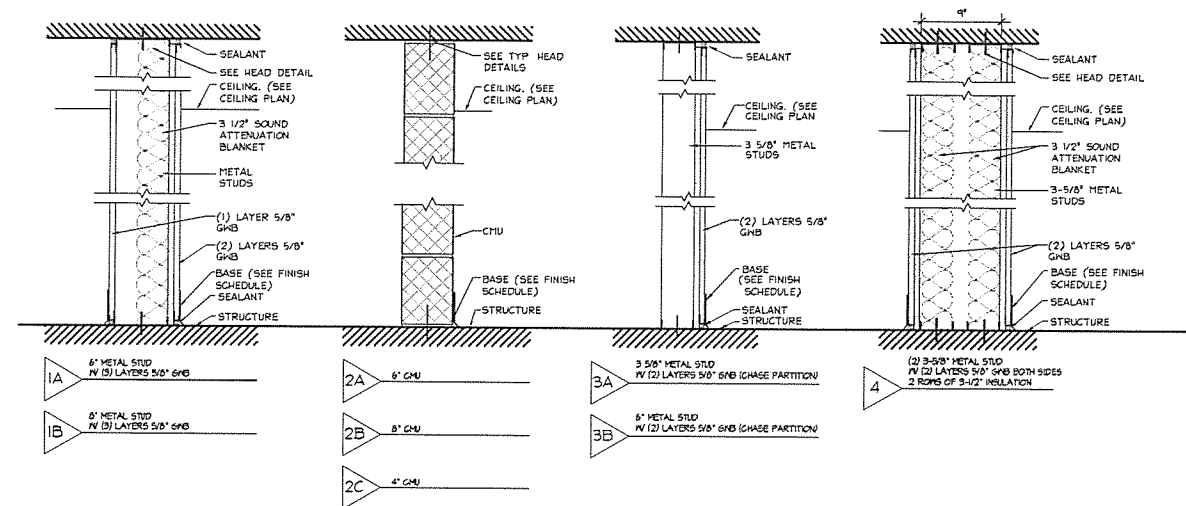
SCHEMATIC DESIGN  
SEPTEMBER 18, 2014

Drawn By  
Checked By  
Scale: AS NOTED  
Date:  
Professional Seal



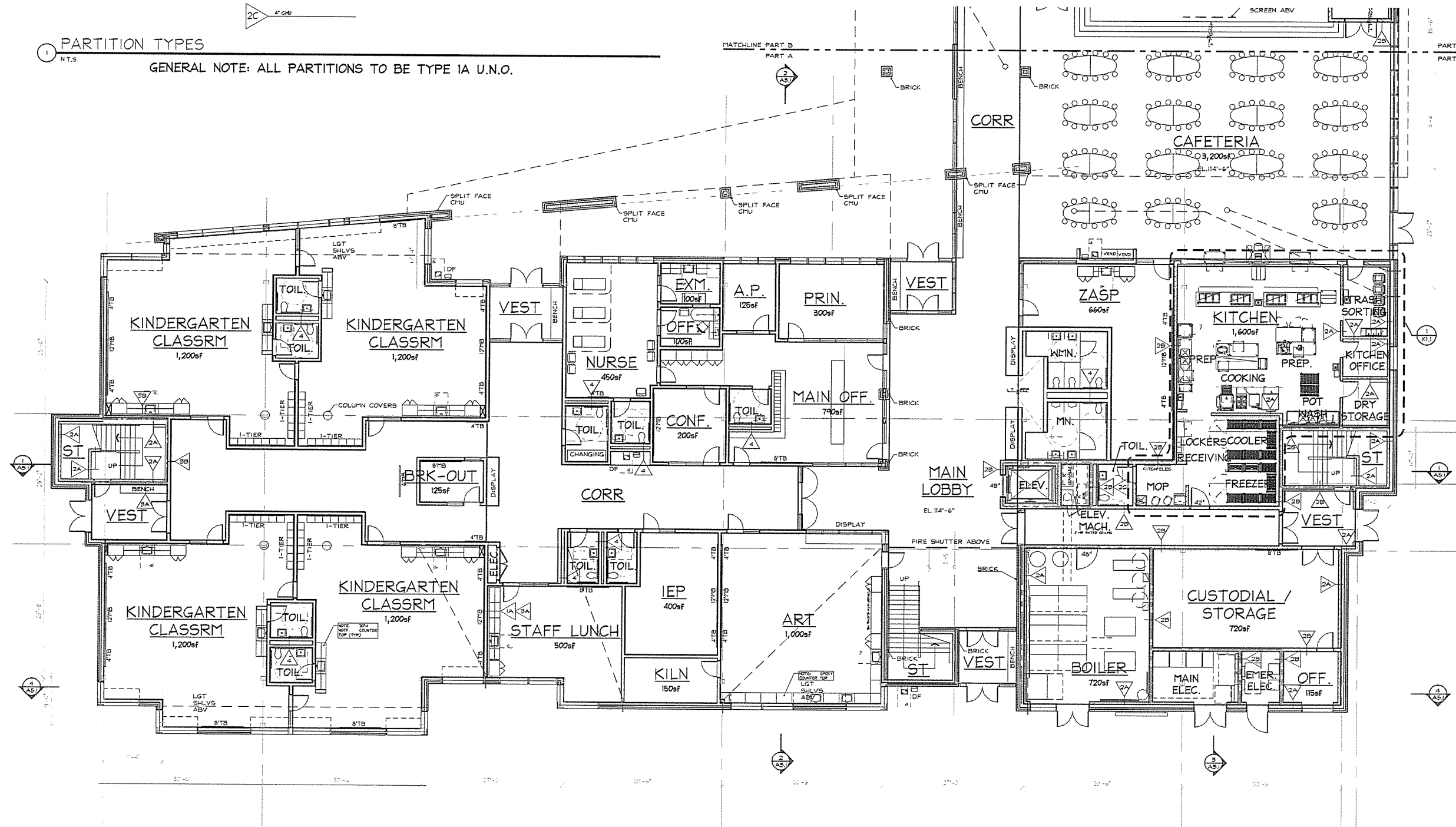
MAIN LEVEL PLAN  
PART A

A1.1A



1 PARTITION TYPES  
NT.S

GENERAL NOTE: ALL PARTITIONS TO BE TYPE 1A U.N.O.



2 MAIN LEVEL PLAN - PART A  
1/8" = 1'-0"

Zervas Elementary School - Newton

### Schematic Architectural Materials & Finishes Summary

#### General:

Roof System:	white PVC membrane w/ 7" insulation and 1/2" protection board
Exterior Wall Assembly	int. finish on 6" GCMF w/ 6" spray applied cellulose, 5/8" gyp. sheathing, air/vapor barrier, 2" mineral wool, air space and exterior veneer (see ext. elev's)
Ext. Curtainwall	similar to Kawneer 1500 thermally broken
Ext. Windows/Storefront	similar to Kawneer Trifab 4511 thermally broken with operables, w/ clear aluminum finish and rolling mesh shades (6% open)
Entranceways	similar to Kawneer Trifab 4511 thermally broken w/ clear aluminum finish
Int. Storefront	similar to Kawneer Trifab 450 w/ clear aluminum finish. All interior borrowed lights to have solid roller shades
At Admin Suite, ZASP, Vest, Conf., Art, Staff Lunch, Media Center, Teachers	
Int. Doors/Frames/Lites	Typical = brick-formed steel frames ptd. with solid wood door and continuous hinges. All interior borrowed lights to have solid roller shades
Lockers/Cubbies	(11) HDWD cubbies (18"x15"x36") at Kindergarten, (260) 2-tier metal lockers (18"x12"x48") in corridors + 12 staff lockers dispersed

#### Legend:

- ACT 1 - Acoustic Ceiling Tile (Armstrong - Ultima with .7 NRC/.90 LR, UQH)  
ACT 2 - Acoustic Ceiling Tile (Armstrong - Mesa, bev regular edge, 2x2 with .6 NRC/.85 LR)  
At Admin Suite, Conf, Staff, Tls, Network  
ACT 3 - Acoustic Ceiling Tile (Armstrong - Healthzone Ultima 2x2 with .7 NRC/.85 LR)  
At Kitchen, Nurse

ACP - Acoustic Ceiling Plank (Armstrong - Optima equivalent)

CMU - Concrete Masonry Unit

CPT - Carpet Tile

CT - Ceramic Tile (4x4 at Walls)

GWB - Gypsum Wall Board

HDWD - Hardwood (solid trim, veneer panels)

LR - Light Reflectance

LT - Linoleum Tile (or Armstrong Bio-Based Tile)

MB - Marker Board

NRC - Noise Reduction Coefficient

PEF - Poured Epoxy Flooring

PP - Porcelain Paver

PTD - Painted

QT - Quarry Tile, then set

REM - Recessed Entry Mat

S. Conc. - Sealed Conc.

TB - Task Board

TFC - Tectum Panel

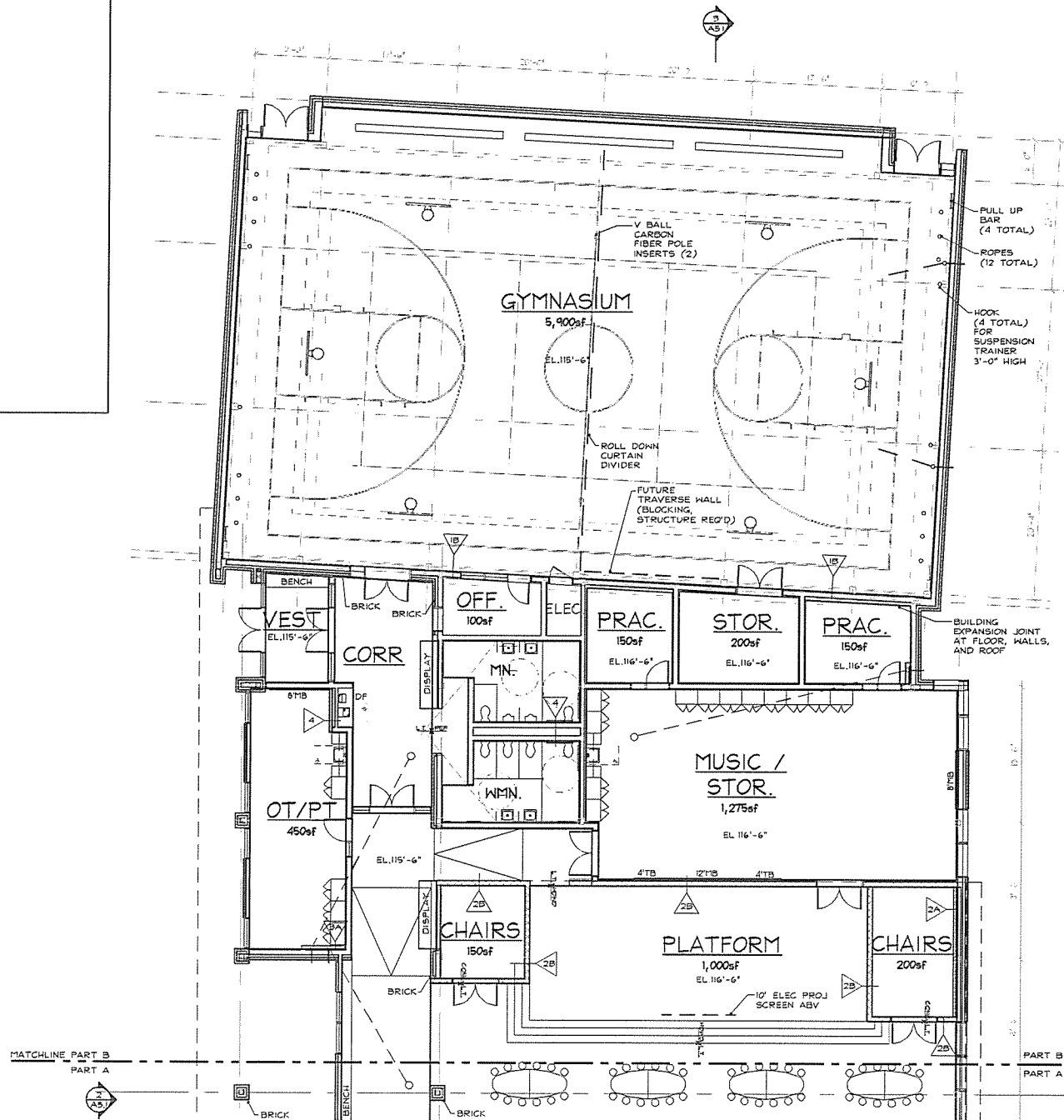
UON - Unless Otherwise Noted

HDWD - Hardwood

Room Type	Floor	Base	Walls	Ceiling	Height	Other Notes
Classroom (Ind. SPED, ZASP)	LT	Vinyl	GWB, PTD	ACT (sloped up from corr. to ext.)	9'-0" to 11'-0"	
Learning Center (LRNG CTR)	LT	Vinyl	Brick* & GWB, PTD	ACT (sloped up from corr. to ext.)	9'-0" to 11'-0"	* see plans for select areas of brick
Sm Grp (IEP, ELL, LIT, MTH, QT, SPCH, INCL, DRK-OUT, SOC, PST)	LT	Vinyl	Brick* & GWB, PTD	ACT	9'-0"	* see plans for select areas of brick
OT/PT	LT	Vinyl	GWB, PTD	ACT	11'-0"	(2) wall and (2) ceiling structural eye-hooks
Art	LT	Vinyl	GWB, Epoxy PTD	ACT (sloped up from corr. to ext.)	9'-0" to 11'-0"	
Music	LT	Vinyl	GWB, PTD	Acoustic Deck w/ 10% reflective panels	12'-6" to deck	30% Acoustic Wall/Clg Panels
Prac/Doe (prac.)	LT	Vinyl	GWB, PTD	Exposed Acoustic Deck, PTD	11'-0"	30% Acoustic Wall Panels
Gym	HTM, HDWD	HDWD	TFC, Epoxy PTD	Exposed Acoustic Deck, PTD	sloped/Varies	6' high wall pad perimeter
Media Center	CPT	Vinyl	GWB, PTD	ACT (sloped up from corr. to ext.)	9'-0" to 11'-0"	6' HDWD wainscott, 10% Acoustic Wall Panels
Cafeteria	LT	LT	CMU, Epoxy PTD	ACT, 25% HDWD Clouds w exp. Steel	16'-0" to 17'-0"	
Platform	HDWD	HDWD	CMU, Epoxy PTD	Exposed Acoustic Deck, PTD	sloped/Varies	
Office Suites (ADMIN, NURSE)	LT	Vinyl	GWB, PTD	50% ACT, 10% GWB Soffits	11'-0"	Suites include MAIN OFF, PRINC, AP, CONF, EXM
Teachers (T. PLNG, STAFF LUNCH)	LT	Vinyl	Brick & GWB, PTD	ACT	11'-0"	
Lobby/Nest/Boules (main floor)	LT/REM	PP	Brick & GWB, PTD	50% WD Plank, 50% GWB, Epoxy PTD	11'-0"	HDWD wainscott 4' high (except at brick)
Corridor/Prep. Areas	LT	Vinyl	Brick & GWB, PTD	ACT (w/ .9 NRC, .9 LC), 10% Soffits	9'-0"	PTD Steel Guard Rail w/ Stainless Cap/Hand Rails
Stairwells (ST)	Rubber	Rubber	CMU, Epoxy PTD	ACT (w/ .9 NRC, .9 LC), 10% Soffits	varies	4' CT wainscott
Single Toilets	PEF	PEF	CT & GWB, Epoxy PTD	ACT (Armstrong - Ceramaguard)	9'-0"	4' CT wainscott
Group Toilets	PEF	PEF	CT & GWB, Epoxy PTD	ACT (Armstrong - Ceramaguard)	9'-0"	
Storage (5' DR, CHAIR, NET/WEIG)	S. Conc.	Vinyl	CMU/GWB, PTD	ACT	12'-0"	
Kitchen (KITCH, MOP, TRASH)	QT	QT	CMU, Epoxy PTD	ACT (ceramaguard equiv.)	12'-0"	35" wide x 8" high ceiling grill at Caf./Kitch. wall
Custodial (CUST, MECH, ELEC)	S. Conc.	Vinyl	CMU	Exposed Deck, PTD	varies	incl. BOILER

## MATERIALS AND FINISHES SUMMARY

NTS



## MAIN LEVEL PLAN - PART B

1/8" = 1'-0"

Design partnership  
OF CAMBRIDGE INC

ARCHITECTURE  
PROGRAMMING  
MASTER PLANNING  
INTERIOR DESIGN

HOOD BUSINESS PARK

500 RUTHERFORD AVENUE

CHARLESTOWN, MA 02129

T 617.241.9800, F 617.241.5143

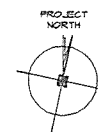
www.ldpc.com

## ZERVAS ELEMENTARY SCHOOL

WABAN, MA

SCHEMATIC DESIGN  
SEPTEMBER 18, 2014

Drawn By  
Checked By  
Scale: AS NOTED  
Date:  
Professional Seal



MAIN LEVEL PLAN  
PART B

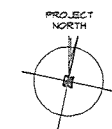
A1.1B



ZERVAS  
ELEMENTARY  
SCHOOL  
WABAN, MA

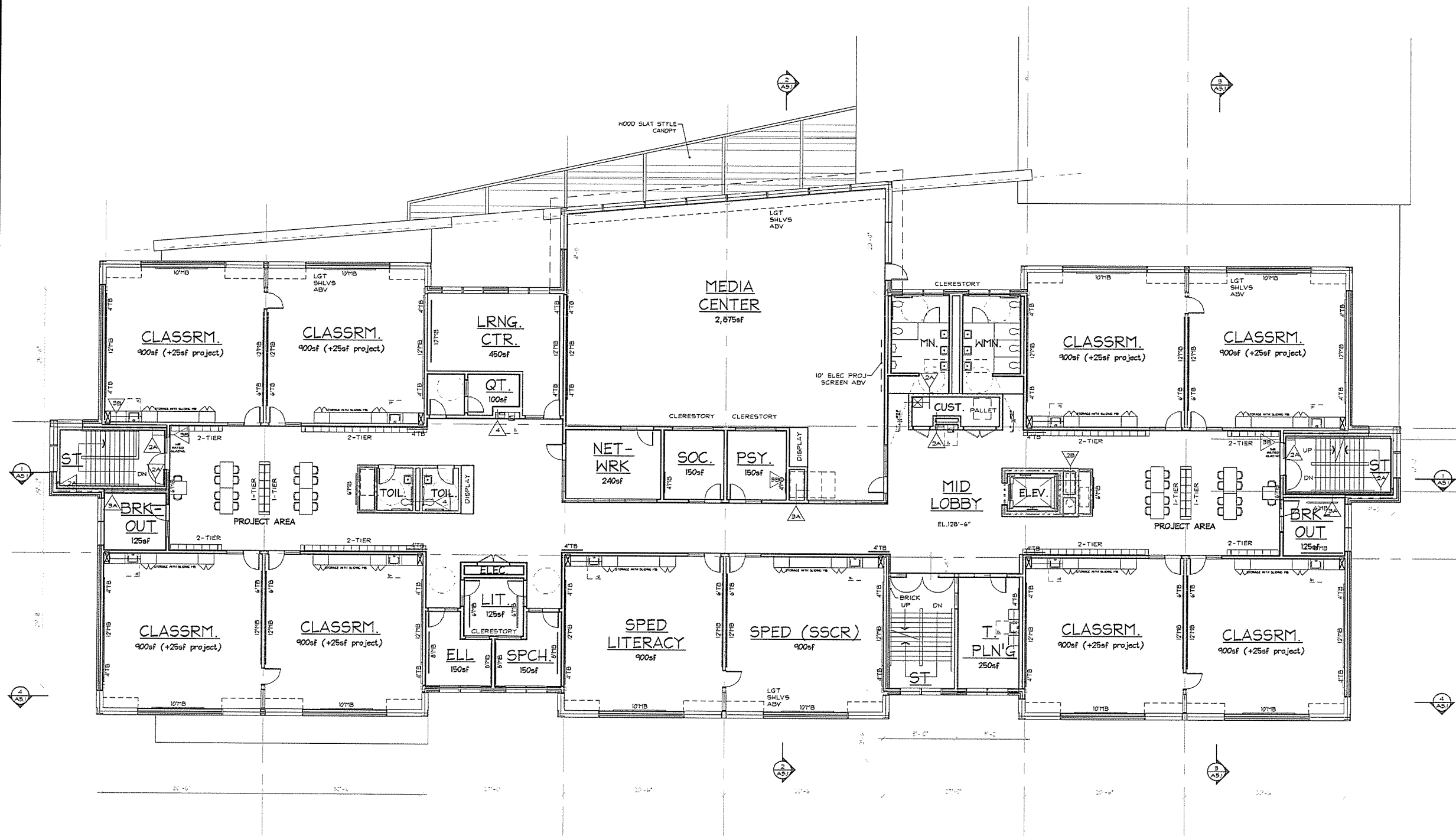
SCHEMATIC DESIGN  
SEPTEMBER 18, 2014

Drawn By  
Checked By  
Scale: AS NOTED  
Date:  
Professional Seal

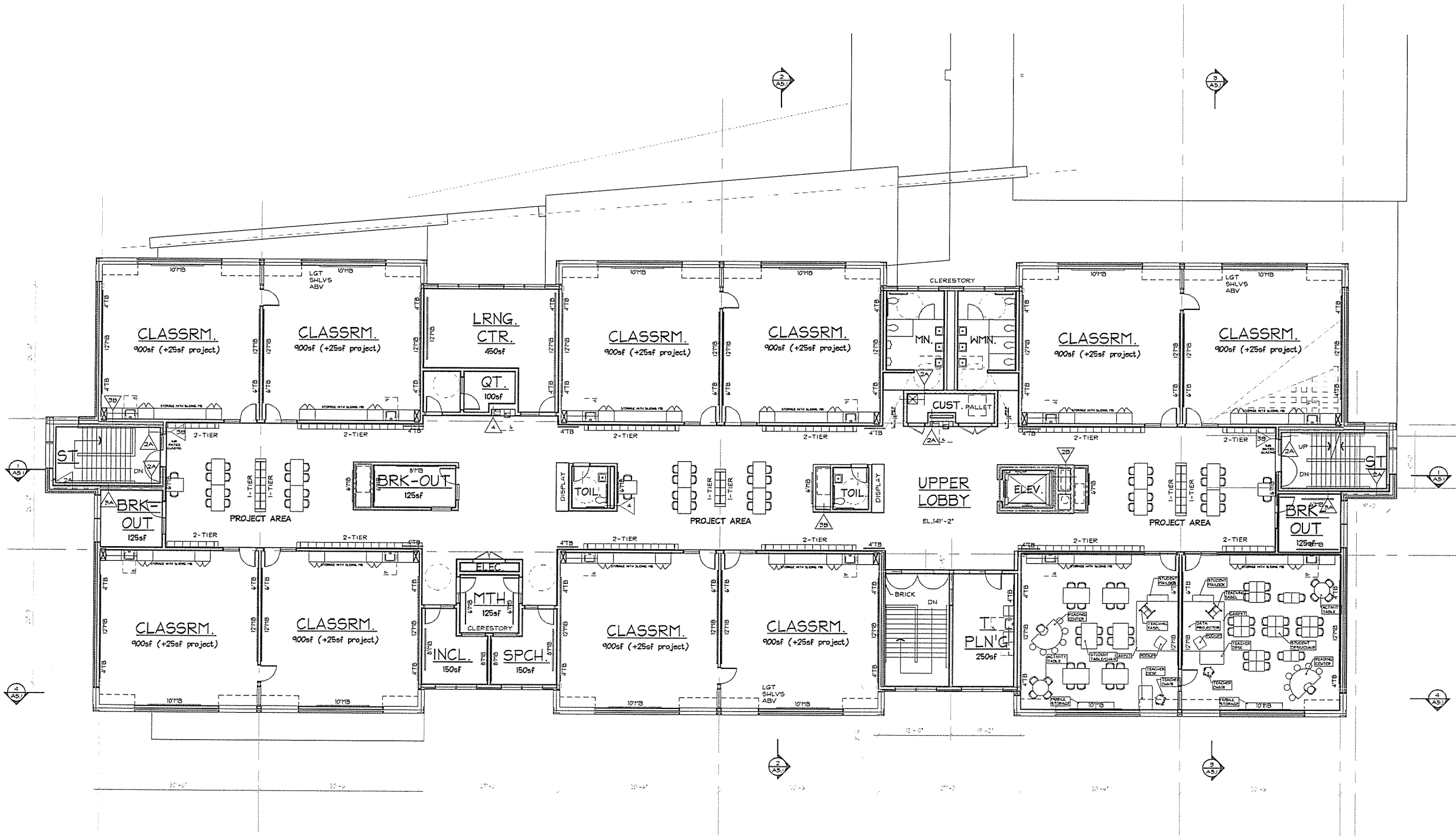


SECOND LEVEL  
PLAN

A1.2



1 SECOND LEVEL PLAN  
1/8" = 1'-0"



1 THIRD LEVEL PLAN  
1/8" = 1'-0"

**Designpartnership**  
OF CAMBRIDGE INC.

HOOD BUSINESS PARK  
500 RUTHERFORD AVENUE  
CHARLESTOWN, MA 02129  
T 617.241.9800, F 617.241.5143  
www.tdpc.com

ARCHITECTURE  
PROGRAMMING  
MASTER PLANNING  
INTERIOR DESIGN

**ZERVAS  
ELEMENTARY  
SCHOOL**

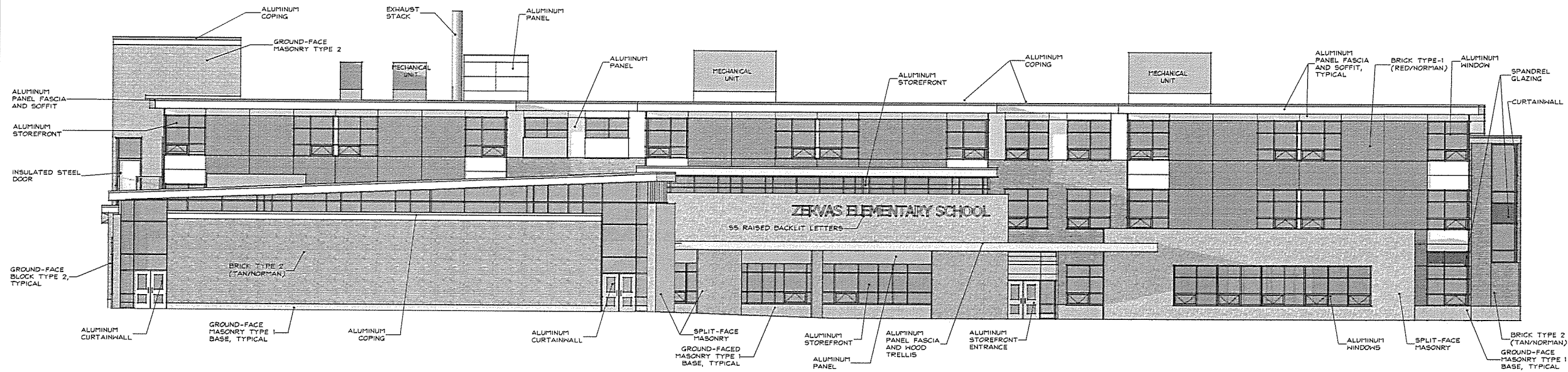
**WABAN, MA**

SCHEMATIC DESIGN  
SEPTEMBER 18, 2014

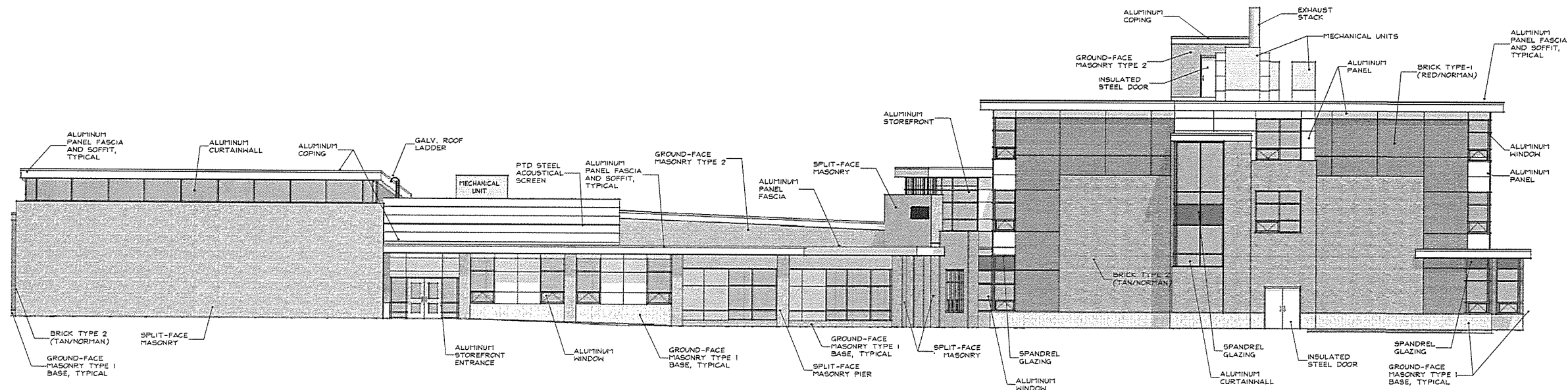
Drawn By  
Checked By  
Scale: AS NOTED  
Date:  
Professional Seal

PROJECT  
NORTH

**THIRD LEVEL  
PLAN**



1 NORTH ELEVATION  
1/8" = 1'-0"



2 WEST ELEVATION  
1/8" = 1'-0"

**Designpartnership**  
OF CAMBRIDGE INC

ARCHITECTURE  
PROGRAMMING  
MASTER PLANNING  
INTERIOR DESIGN

HOOD BUSINESS PARK  
500 RUTHERFORD AVENUE  
CHARLESTOWN, MA 02129  
T 617.241.9800, F 617.241.5143  
www.tdpc.com

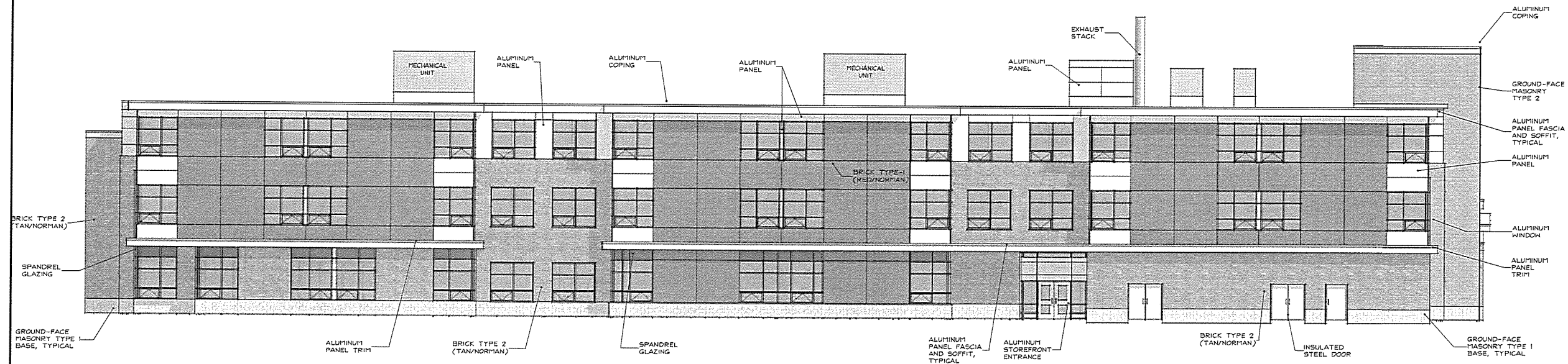
**ZERVAS  
ELEMENTARY  
SCHOOL**  
**WABAN, MA**

SCHEMATIC DESIGN  
SEPTEMBER 18, 2014

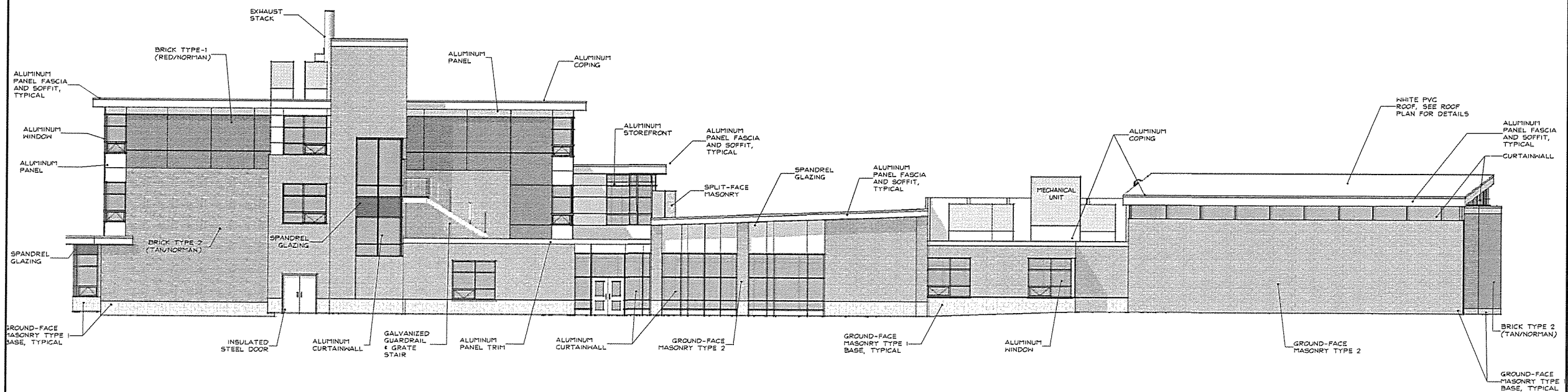
Drawn By: JP  
Checked By: AS  
Scale: AS NOTED  
Date: Professional Seal

**EXTERIOR  
ELEVATIONS**

**A3.1**



1 SOUTH ELEVATION  
1/8" = 1'-0"



2 EAST ELEVATION  
1/8" = 1'-0"

**Designpartnership**  
OF CAMBRIDGE INC

ARCHITECTURE  
PROGRAMMING  
MASTER PLANNING  
INTERIOR DESIGN  
HOOD BUSINESS PARK  
500 RUTHERFORD AVENUE  
CHARLESTOWN, MA 02129  
T 617.241.9800, F 617.241.5143  
www.tdpc.com

**ZERVAS  
ELEMENTARY  
SCHOOL**  
WABAN, MA

SCHEMATIC DESIGN  
SEPTEMBER 18, 2014

Drawn By  
Checked By  
Scale: AS NOTED  
Date:  
Professional Seal

**EXTERIOR  
ELEVATIONS**

**A3.2**

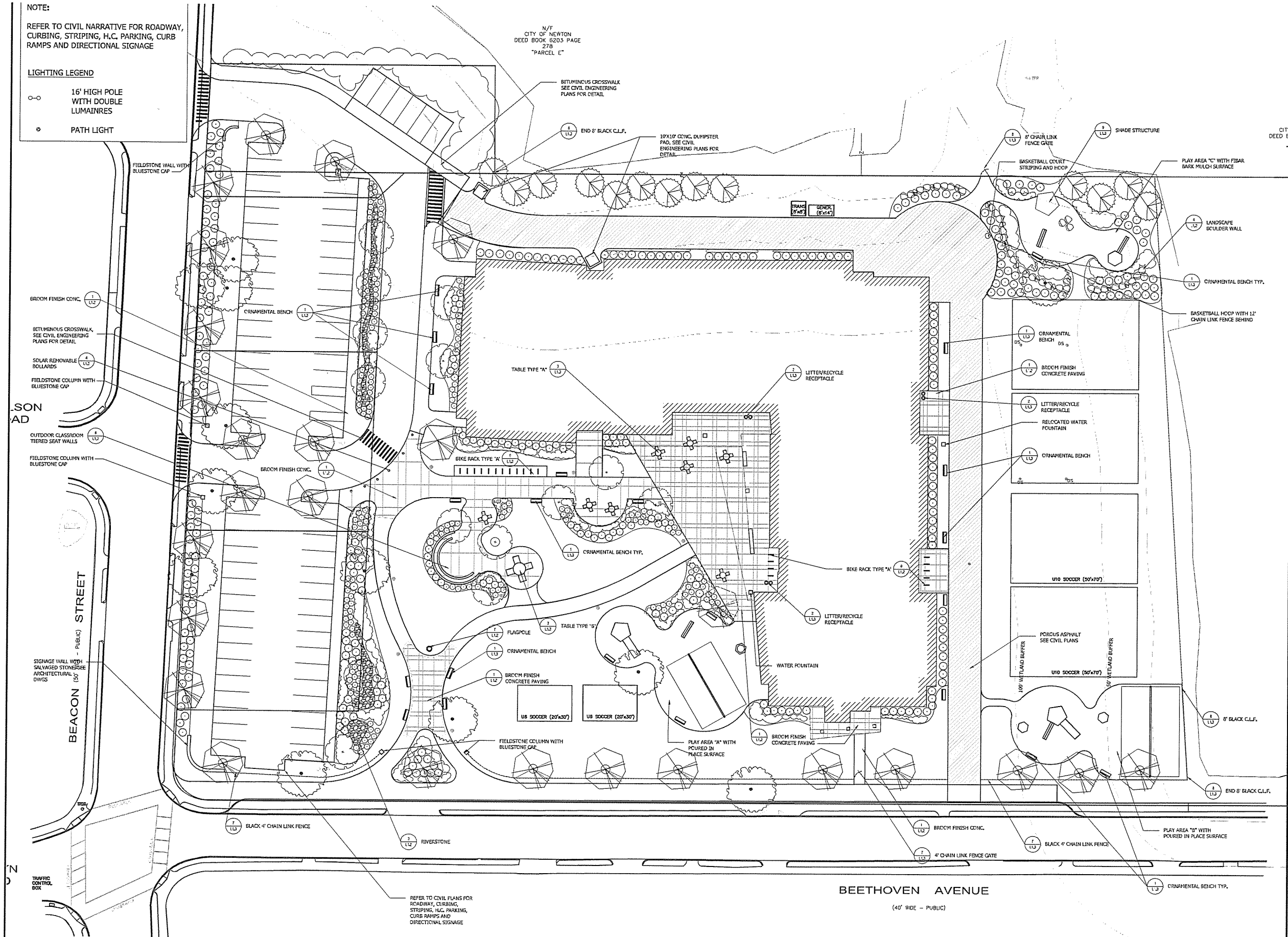


NOTE:

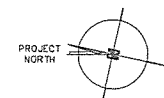
REFER TO CIVIL NARRATIVE FOR ROADWAY, CURBING, STRIPING, H.C. PARKING, CURB RAMPS AND DIRECTIONAL SIGNAGE

LIGHTING LEGEND

- 16" HIGH POLE WITH DOUBLE LUMINAIRES
- PATH LIGHT



1 SITE PLAN - MATERIALS PLAN  
1" = 20'-0"



**Design partnership**  
OF CAMBRIDGE INC.

ARCHITECTUR  
PROGRAMMING  
MASTER PLANNING  
INTERIOR DESIGN

HOOD BUSINESS PARK  
500 RUTHERFORD AVENUE  
CHARLESTOWN, MA 02129  
T 617.241.9800, F 617.241.5143  
www.tdpc.com



**ZERVAS  
ELEMENTARY  
SCHOOL**  
NEWTON, MA

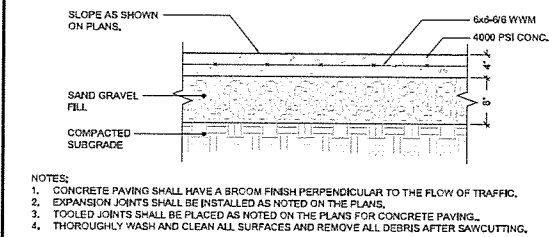
BOARD OF ALDERMAN  
5.58 SUBMISSION  
NOVEMBER 14, 2014

Drawn By: Al  
Checked By: KB  
Scale: AS SHOWN  
Date: 10.28.14  
Professional Seal

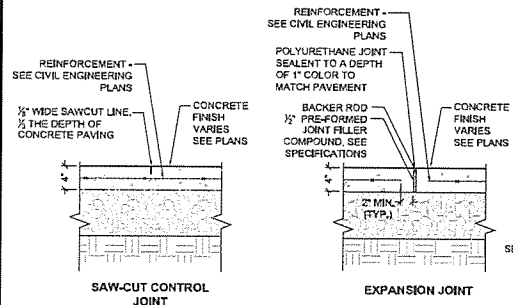
**LANDSCAPE  
MATERIALS PLAN**

L1.1

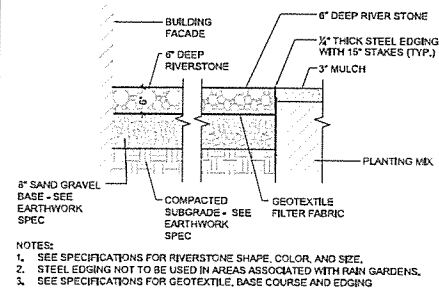




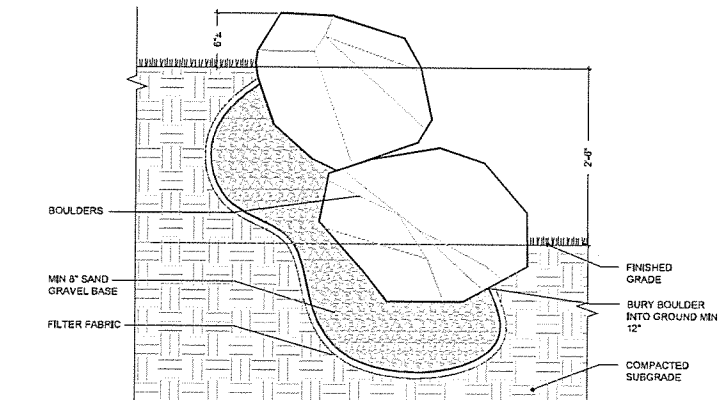
**1 BROOM FINISH CONCRETE PAVING**  
 SCALE: 1"=1'



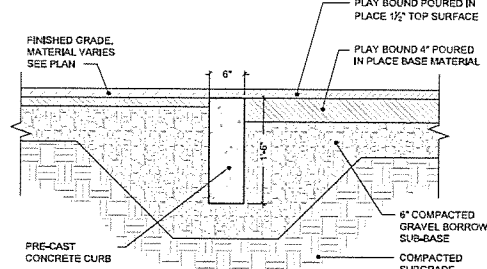
**2 CONCRETE PAVEMENT JOINTS**  
 SCALE: 1"=1'



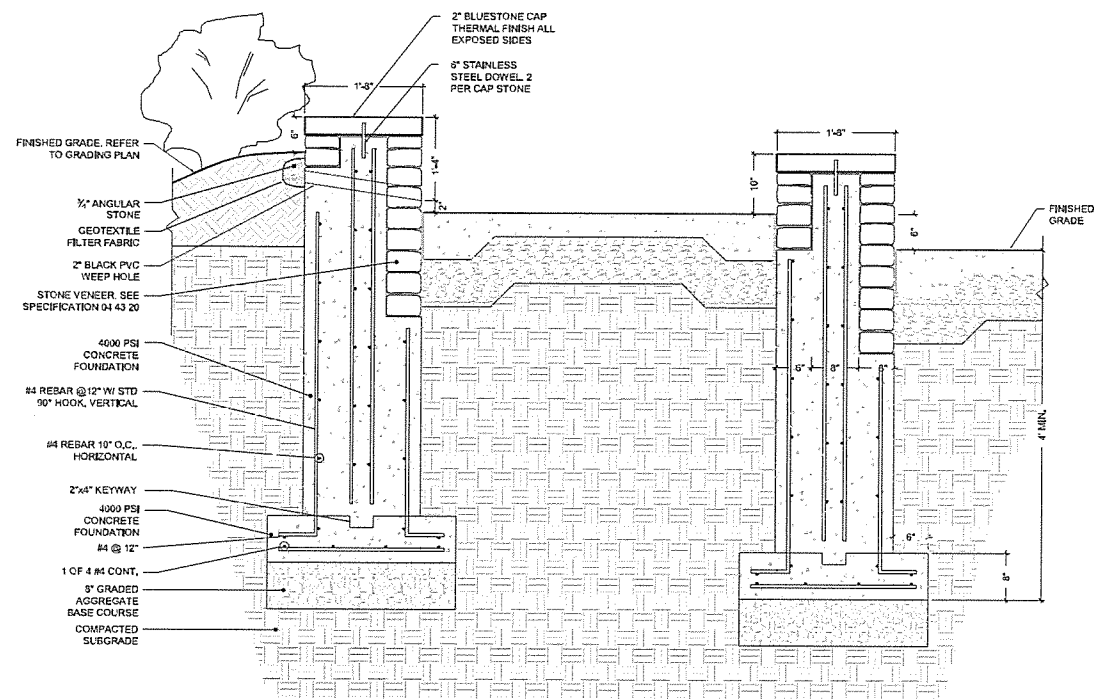
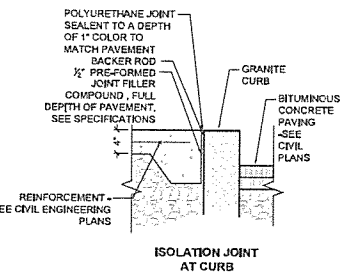
**3 RIVERSTONE**  
 SCALE: 3/4"=1'



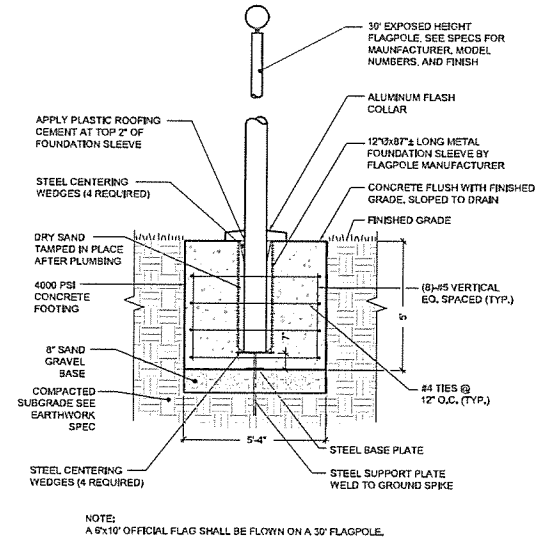
**4 LANDSCAPE BOULDER WALL**  
 SCALE: 1"=1'



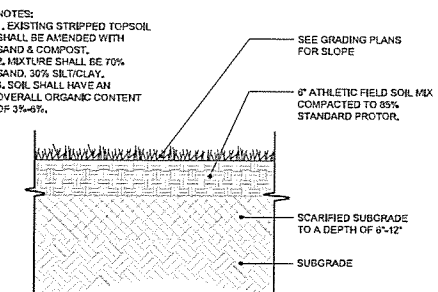
**5 PLAYGROUND SURFACE MATERIAL**  
 SCALE: 1"=1'



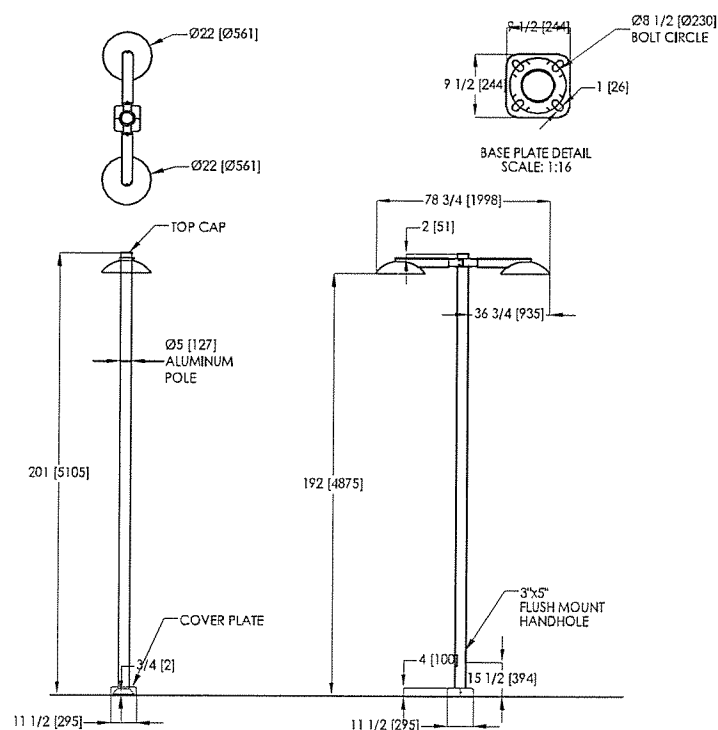
**6 OUTDOOR CLASSROOM TIERED SEATWALLS**  
 SCALE: 1"=1'



**7 FLAGPOLE**  
 SCALE: 3/8"=1'

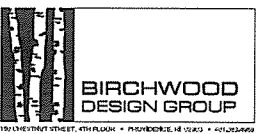


**9 ATHLETIC FIELD SOIL DETAIL**  
 SCALE: NOT TO SCALE



LED LUMINAIRE, NIGHT SKY FRIENDLY, 16' POLE HEIGHT, DOUBLE OR SINGLE FIXTURE, ALUMINUM POLE, POWDER-COAT BLACK.

**8 LIGHT DETAIL**  
 SCALE: 3/4"=1'



**ZERVAS  
 ELEMENTARY  
 SCHOOL**  
 NEWTON, MA

BOARD OF ALDERMAN  
 5.58 SUBMISSION  
 NOVEMBER 14, 2014

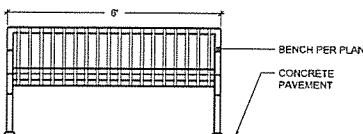
Drawn By: AJ  
 Checked By: KB  
 Scale: AS SHOWN  
 Date: 10.28.14  
 Professional Seal

**SITE  
 DETAILS SHEET 1**



SIDE ELEVATION

MOUNTING DETAIL

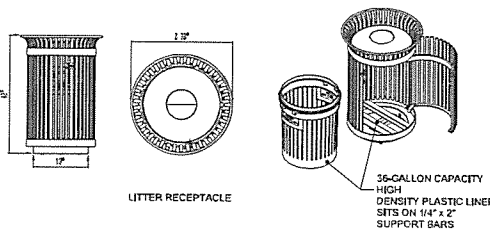


REAR ELEVATION

- NOTES:
1. BENCHES SHALL BE SURFACE MOUNTED AT LOCATION SHOWN ON PLANS.
  2. INSTALLATION TO BE COMPLETED IN ACCORDANCE WITH MANUFACTURERS SPECIFICATIONS.
  3. SEE SPECIFICATIONS FOR MANUFACTURER, MODEL, & FINISH.
  4. OFFSET BENCH 6" FROM PLANTER FACE MEASURED FROM LEADING BACK EDGE OF BENCH OR AS SHOWN ON PLANS.

### 1 ORNAMENTAL BENCH

SCALE: 1/2"=1'



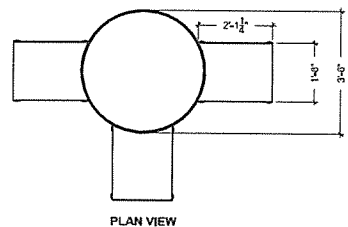
LITTER RECEPTACLE

35-GALLON CAPACITY  
HIGH DENSITY PLASTIC LINER  
SETS ON 1 1/4" x 2" SUPPORT BARS

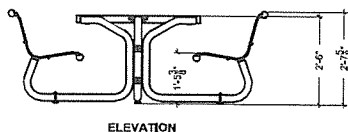
- NOTES:
1. SEE SPECIFICATIONS FOR MODEL, TYPE, COLOR AND FINISH

### 2 LITTER RECEPTACLE

SCALE: N.T.S.



PLAN VIEW

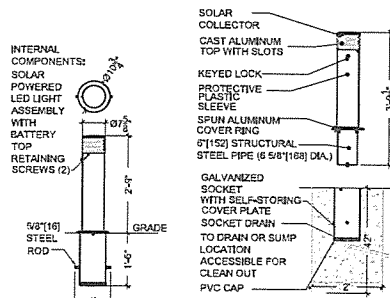


ELEVATION

- NOTES:
1. TABLE SHALL BE SURFACE MOUNTED PER MANUFACTURERS INSTRUCTIONS SEE SPECIFICATIONS FOR MANUFACTURER, MODEL, & FINISH
  2. TABLE TYPE "A" SHALL HAVE THREE SEATS - SEE SPECIFICATIONS FOR MORE INFORMATION
  3. TABLE TYPE "B" SHALL HAVE 8 SEATS - SEE SPECIFICATIONS FOR MORE INFORMATION

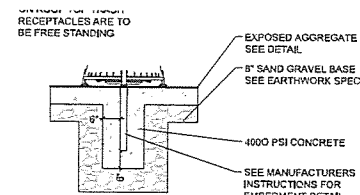
### 3 OUTDOOR TABLE TYPE A & B

SCALE: 1/2"=1'



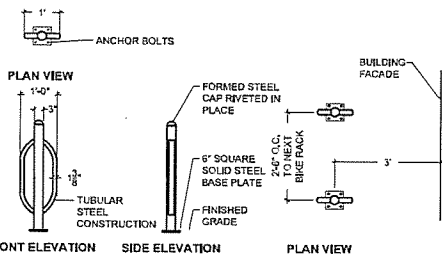
### 4 REMOVABLE SOLAR BOLLARD

SCALE: 1/2"=1'



### 5 RECEPTACLE MOUNTING DETAIL

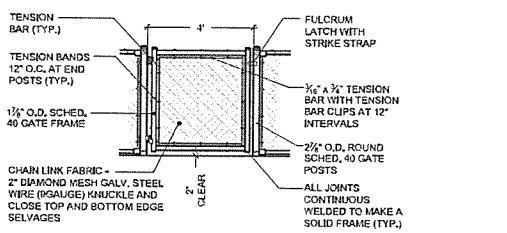
SCALE: 1/2"=1'



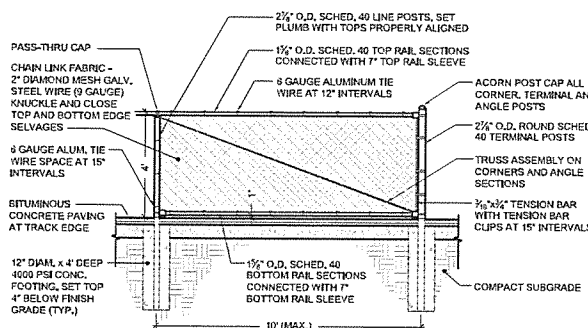
- NOTES:
1. BIKE RACK SHALL BE SURFACE MOUNTED AT LOCATION SHOWN ON PLANS.
  2. INSTALLATION TO BE COMPLETED IN ACCORDANCE WITH MANUFACTURERS SPECIFICATIONS.
  3. SEE SPECIFICATIONS FOR MANUFACTURER, MODEL, & FINISH

### 6 BIKE RACK TYPE A

SCALE: 1/2"=1'

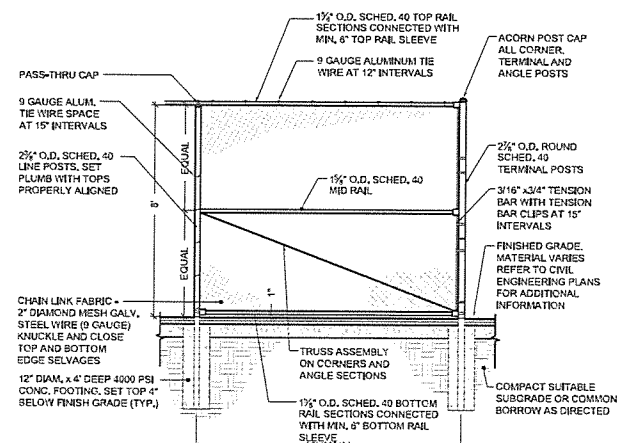


GATE ELEVATION



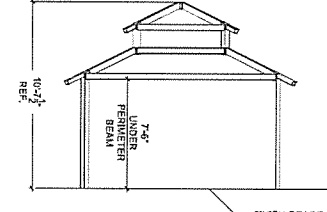
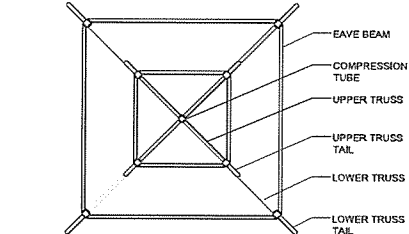
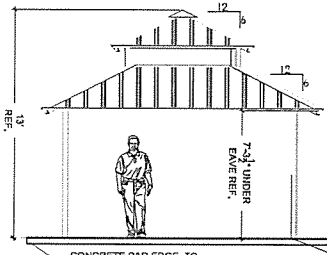
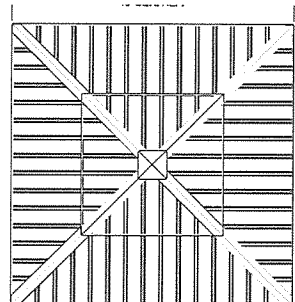
### 7 4' BLACK VINYL CHAIN LINK FENCE AND GATE

SCALE: 3/8"=1'



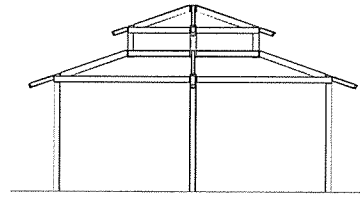
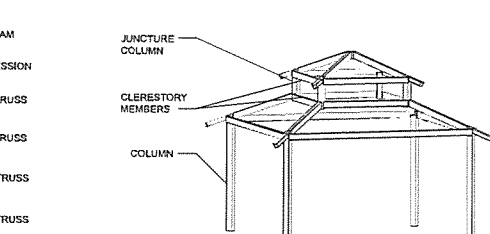
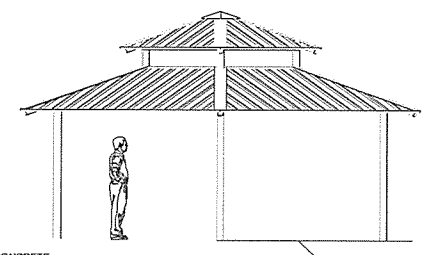
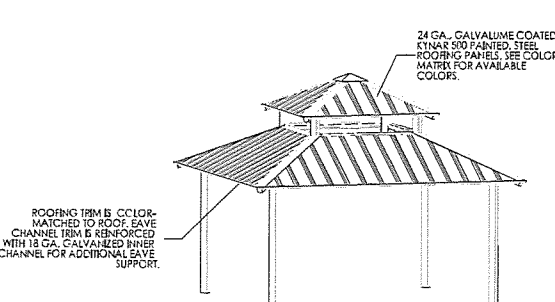
### 8 8' BLACK VINYL CHAIN LINK FENCE

SCALE: 3/8"=1'



### 9 SHADE STRUCTURE

SCALE: 1/8"=1'



**Design partnership**  
OF CAMBRIDGE INC

ARCHITECTUR  
PROGRAMMING  
MASTER PLANNING  
INTERIOR DESIGN

HOOD BUSINESS PARK  
500 RUTHERFORD AVENUE  
CHARLESTOWN, MA 02129  
T 617.241.9800, F 617.241.5143  
www.tdpc.com

**BIRCHWOOD  
DESIGN GROUP**

100 CHESTNUT STREET 11TH FLOOR • PROVIDENCE, RI 02903 • 401.451.1996

**ZERVAS  
ELEMENTARY  
SCHOOL**

NEWTON, MA

BOARD OF ALDERMAN  
5-58 SUBMISSION  
NOVEMBER 14, 2014

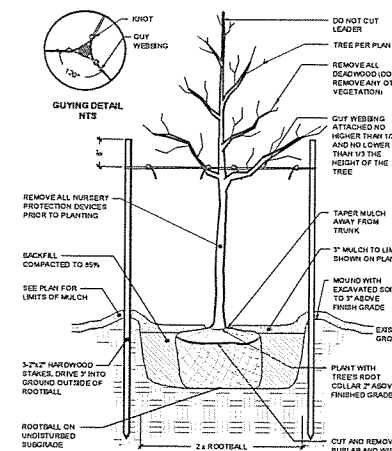
Drawn By: AI  
Checked By: KB  
Scale: AS SHOWN  
Date: 10.28.14  
Professional Seal

MASSACHUSETTS  
STATE SEAL  
OFFICE OF THE ATTORNEY GENERAL  
JULY 19, 1780

SITE  
DETAILS SHEET2

L1.3

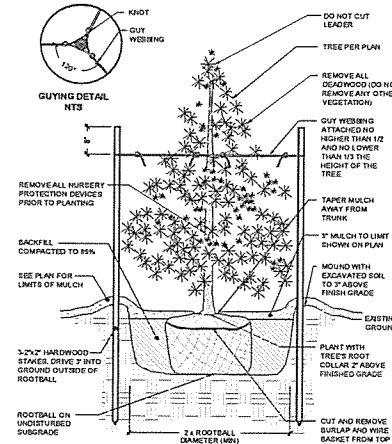




NOTE:  
1. ALL TREES SHALL BE SET SO THAT THE ROOT FLARE IS ABOVE EXISTING GRADE.  
2. AFTER THE GUARANTEE PERIOD THE CONTRACTOR WILL BE RESPONSIBLE FOR THE REMOVAL OF STAKES AND GUY WEBBING.  
3. ALL TREES NOT LOCATED WITHIN A LARGER MULCHED PLANTING BED SHALL RECEIVE A 5\"/>

#### DECIDUOUS TREE STAKING & PLANTING

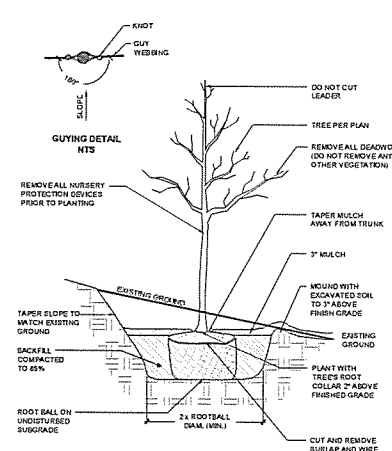
SCALE: NOT TO SCALE



NOTE:  
1. ALL TREES SHALL BE SET SO THAT THE ROOT FLARE IS ABOVE EXISTING GRADE.  
2. AFTER THE GUARANTEE PERIOD THE CONTRACTOR WILL BE RESPONSIBLE FOR THE REMOVAL OF STAKES AND GUY WEBBING.  
3. ALL TREES NOT LOCATED WITHIN A LARGER MULCHED PLANTING BED SHALL RECEIVE A 5\"/>

#### EVERGREEN TREE STAKING & PLANTING

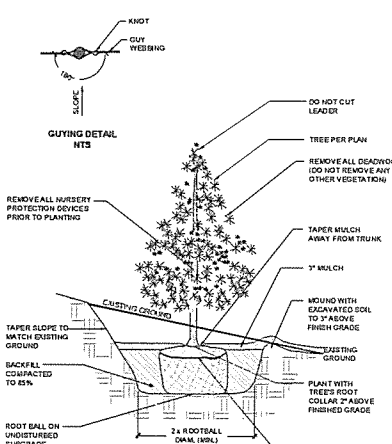
SCALE: NOT TO SCALE



NOTE:  
SLOPE PLANTING STAKES SHALL BE PLACED PARALLEL TO SLOPE.

#### DECIDUOUS TREE PLANTING ON SLOPE

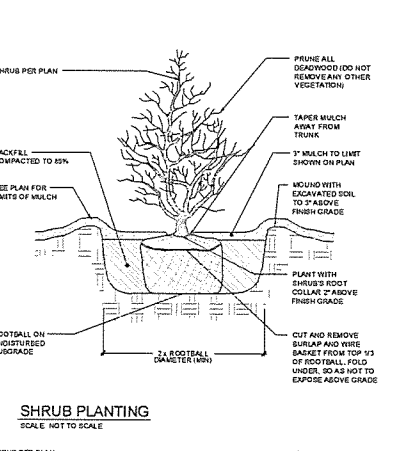
SCALE: NOT TO SCALE



NOTE:  
SLOPE PLANTING STAKES SHALL BE PLACED PARALLEL TO SLOPE.

#### EVERGREEN TREE PLANTING ON SLOPE

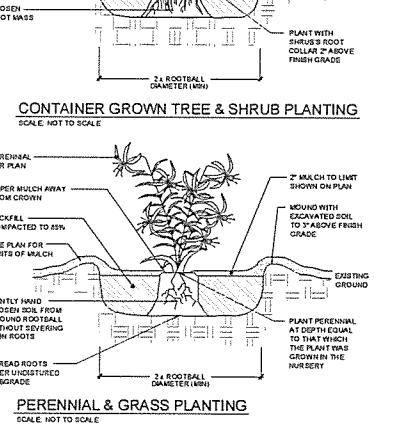
SCALE: NOT TO SCALE



NOTE:  
SLOPE PLANTING STAKES SHALL BE PLACED PARALLEL TO SLOPE.

#### SHRUB PLANTING

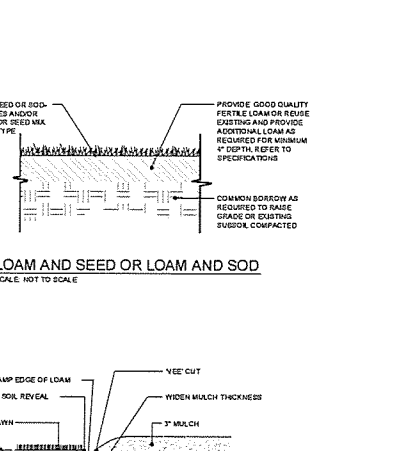
SCALE: NOT TO SCALE



NOTE:  
SLOPE PLANTING STAKES SHALL BE PLACED PARALLEL TO SLOPE.

#### CONTAINER GROWN TREE & SHRUB PLANTING

SCALE: NOT TO SCALE



NOTE: LOCATE BEDLINE AS SHOWN ON PLAN.

#### LOAM AND SEED OR LOAM AND SOD

SCALE: NOT TO SCALE



NOTE: LOCATE BEDLINE AS SHOWN ON PLAN.

#### BEDLINE EDGE

SCALE: NOT TO SCALE

PLANT LIST THIS SHEET				
QTY	BOTANICAL NAME	COMMON NAME	QTY	SIZE
TREES				
11	Acer glabrum "October Glory"	Red Maple	11	3.5-4\"/>
5	Betula utilis "Oleaster"	Honeycrisp Birch	5	10-12\"/>
7	Campanula medium	Lupinus Cypripedium	7	8-10\"/>
6	Prunus serotina	Kawano Flowering Cherry	6	2-3\"/>
15	Prunus x hortensis "Shogakukan"	Shogakukan London Plum	15	3.5-4\"/>
2	Quercus pedunculata	Pink Oak	2	3.5-4\"/>
SHRUBS				
51	Buxus "Green Gem"	Boxwood	51	18-24\"/>
53	Cedrus atlantica "Hummelbush"	Swiss Cedar	53	18-24\"/>
21	Cornus sericea "Kelsey"	Kelsey Red Twig Dogwood-Compact	21	5 GAL. CONT.
87	Colony "Karl Foerster"	Festuca Reed Grass	87	3 GAL. CONT.
17	Hydrangea macrophylla "Munich"	Munich Hydrangea	17	18-24\"/>
13	Hydrangea paniculata "Bob"	Hydrangea "Bob"	13	18-24\"/>
49	Hydrangea paniculata "Little Lime"	Hydrangea "Little Lime"	49	18-24\"/>
30	Hamamelis "Shanahan"	Shanahan Hamamelis	30	18-24\"/>
22	Hamamelis "Red Spirit"	Hamamelis	22	18-24\"/>
19	Hamamelis "Yellow Star"	Hamamelis	19	3 GAL. CONT.
63	Hamamelis "Yellow Star"	Hamamelis	63	3 GAL. CONT.
10	Hamamelis "Yellow Star"	Hamamelis	10	18-24\"/>
15	Hamamelis "Yellow Star"	Hamamelis	15	18-24\"/>
24	Hamamelis "Yellow Star"	Hamamelis	24	18-24\"/>
PERENNIALS/GRASSES				
17	Anemone x hybrid "Vancouver"	Anemone	17	1 GAL. CONT.
48	Desmodium illinoense	Illinois Tick	48	1 GAL. CONT.
43	Desmodium illinoense	Purple Butterfly	43	1 GAL. CONT.
73	Desmodium illinoense	Desmodium	73	1 GAL. CONT.
28	Desmodium illinoense	Desmodium	28	1 GAL. CONT.
143	Desmodium illinoense	Desmodium	143	1 GAL. CONT.
43	Desmodium illinoense	Desmodium	43	1 GAL. CONT.
15	Desmodium illinoense	Desmodium	15	1 GAL. CONT.
107	Desmodium illinoense	Desmodium	107	1 GAL. CONT.
56	Desmodium illinoense	Desmodium	56	1 GAL. CONT.
137	Desmodium illinoense	Desmodium	137	1 GAL. CONT.
123	Desmodium illinoense	Desmodium	123	1 GAL. CONT.

#### GENERAL NOTES:

- All plant material must be tagged in the ground, at the nursery by the Landscape Architect. All plant material shall be commercially obtained and shall meet the American Association of Nurseryman standards for nursery stock, latest edition, and its amendments. Plant only during season normal to the particular variety. All plant inspections will be at the expense of the contractor. Permanent seals will be required.
- Cover all planting beds with 3\"/>
- All existing and proposed trees shown in lawn areas shall receive a 6\"/>
- All plant materials furnished by the contractor shall be guaranteed for a period of one year from final acceptance of landscape work.
- Stake all trees over 5\"/>
- The contractor is responsible for keeping the site clean of miscellaneous debris throughout the construction period. All waste material is to be disposed of immediately to an off-site location, unless otherwise indicated on the plans.
- The contractor shall perform all work in accordance with all local, state, and federal regulations, and shall obtain all necessary permits for this project.
- Layout: All notes and dimensions are typical unless otherwise noted. All dimensions are square (parallel or perpendicular) unless otherwise noted. The contractor shall notify the owner/owner's representative immediately in the event of any discrepancies found in the contract documents and/or in the field, or of conditions uncovered in the work which are not reflected in the plans.
- Loam: Loam moved during the course of construction shall be retained and distributed within the site in accordance with the landscape plan. Stockpiled loam shall not be mixed with any subsoil or unsuitable materials. All excess loam shall remain on the property of the owner. New loam if required to provide the specified depth, shall be a fertile, friable medium textured sandy loam free of material toxic to healthy plant growth. Loam shall also be free of all stumps, roots, stones and other extraneous matter on inch (1\") or greater in diameter. The PH shall be between 5.5 and 7.5 when tested.
- Lawn Preparation: Remove all debris and other inorganic materials on the prepared subgrade, reshape and dress any damaged or eroded area prior to spreading the loam. Scarify and loosen subgrade in any areas where compaction may have occurred. Spread stockpiled and off-site loam on all disturbed areas to produce a depth of 6\"/>
- Seeding: Seeding shall take place between March 15 and May 31 or August 15 and October 15 only. Seed shall be pure, live, fresh seed from commercial sources meeting and labeled in accordance with State and Federal rules and regulations.
- Protection of Existing Plantings: Maximum effort should be made to save tree or other plant specimens which are large for their species, rare to the area, or of special horticultural or landscape value. Contact owner/landscape architect before removing any specimen of this type unless otherwise noted on the plans. No material or temporary soil deposits shall be placed within the drip line of shrubs or trees designated on the landscape plan to be retained. Protective barriers are to be installed around each plant and/or group of plants that are to remain on the site. Barriers shall not be supported by the plants they are protecting, but shall be self supporting. They shall be of minimum of four feet (4') high and constructed of a durable material, such as snow or silt fence, that will last until construction is completed.
- Pruning: The contractor shall carefully prune branches in the way of construction by using only approved methods and tools. The use of axes for trimming or spurs for climbing will not be permitted.
- Existing Utilities: In accordance with Dig-Safe law (1-800-225-4977), the contractor shall contact all applicable utility companies and verify utility line locations. The contractor shall be solely responsible for any/all utility damage. Record locations of Dig-Safe utility line markings on project record documents.
- Disturbed Areas: Any areas disturbed during the course of construction are to be restored to original (or better) condition by contractor before completion of the project, and are subject to approval by landscape architect and owner. All grass areas disturbed during construction shall be yolk raked to remove stones and loamed and seeded as per specifications.
- Drainage Systems: Contractor is responsible for general clean-out of all catch basins, manholes, and/or other drainage features on the site which have accumulated sediment as a result of construction activities.
- Cleaning: Contractor is responsible for keeping site clean of miscellaneous debris throughout the construction period. All waste material is to be disposed of immediately to an off-site location, unless otherwise indicated on the plan.

Designpartnership  
OF CAMBRIDGE INC

ARCHITECTURE  
PROGRAMMING  
MASTER PLANNING  
INTERIOR DESIGN

HOOD BUSINESS PARK  
500 RUTHERFORD AVENUE  
CHARLESTOWN, MA 02129  
T 617.241.9800, F 617.241.5143  
WWW.DTPC.COM

BIRCHWOOD  
DESIGN GROUP

150 CHESTNUT STREET 4TH FLOOR • PROVIDENCE, RI 02903 • 401.850.0000

ZERVAS  
ELEMENTARY  
SCHOOL

NEWTON, MA

BOARD OF ALDERMAN  
5.58 SUBMISSION  
NOVEMBER 14, 2014

Drawn By: AB  
Checked By: KB  
Scale: AS SHOWN  
Date: 10.28.14  
Professional Seal

PLANTING  
DETAILS

L1.5