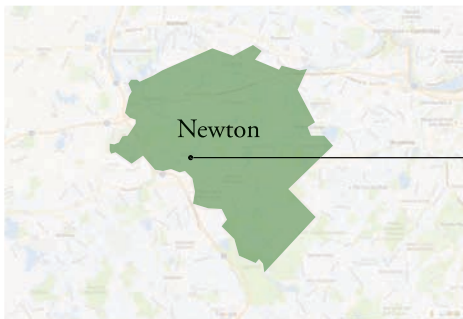


# WABAN COMMON LANDSCAPE IMPROVEMENTS

May 8, 2017

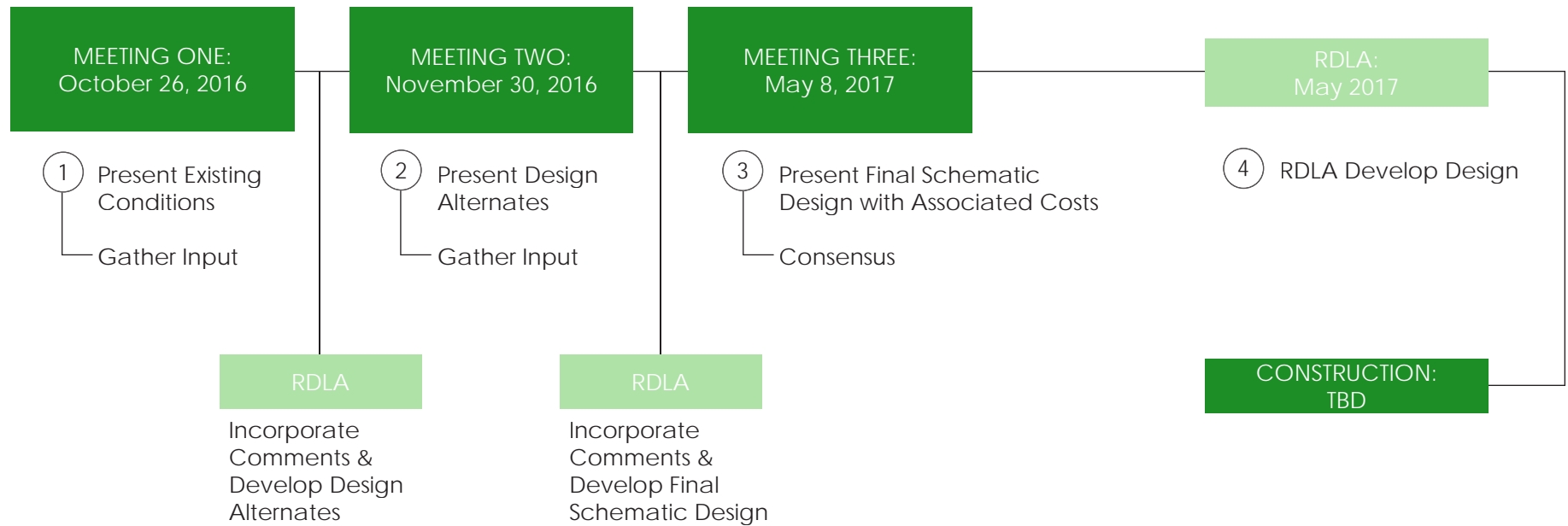


rdla



Site Location

# SCHEDULE



We want this renovation to reflect the needs of the Community in City of Newton.

Join Us! What's Your Vision?

# NEIGHBORHOOD CONNECTIONS



ANGIER ELEMENTARY SCHOOL



WABAN LIBRARY



PARISH OF THE GOOD SHEPHERD



VILLAGE STORES



UNION CHURCH

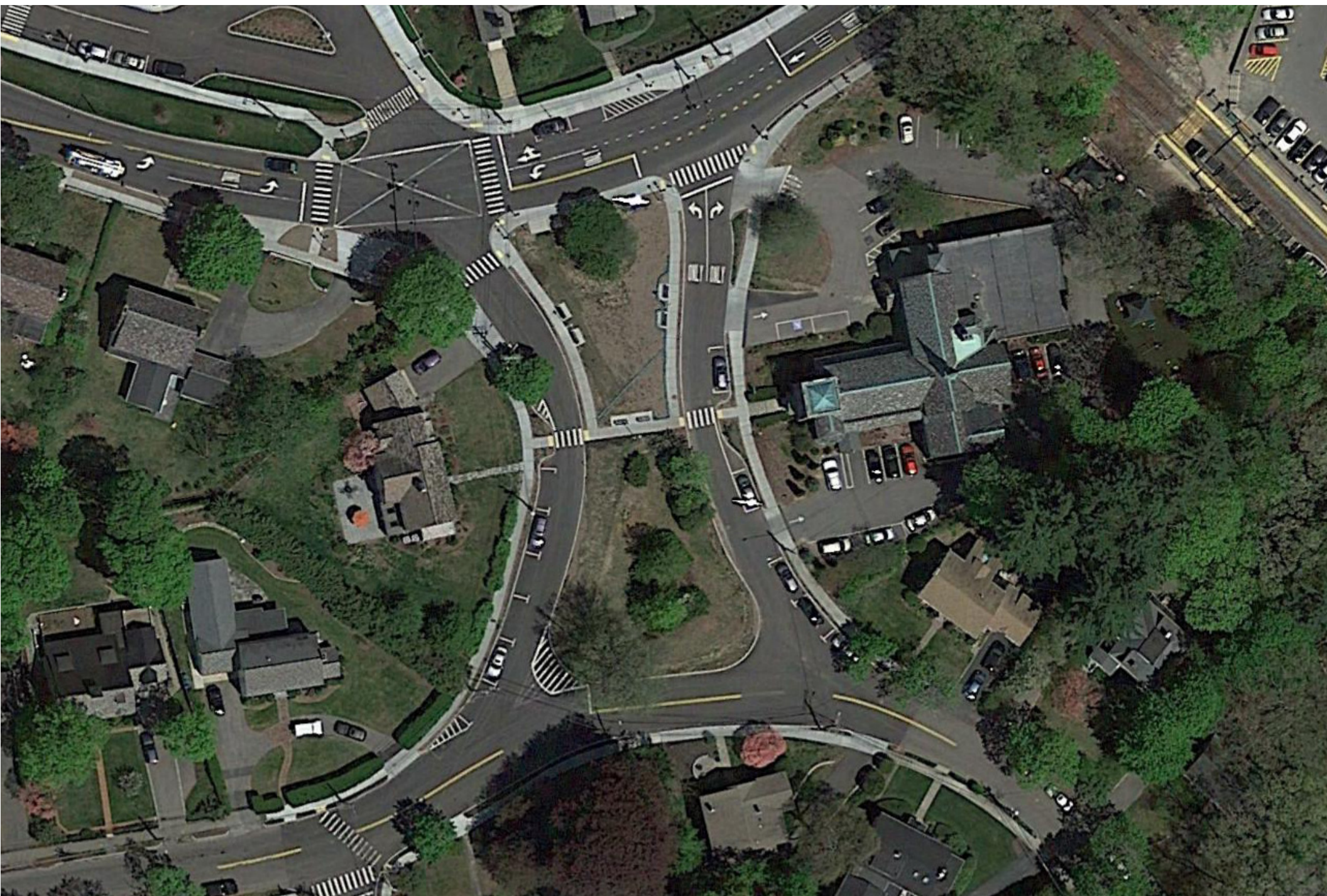


GRAPHIC SCALE IN FEET

0 250 500 1000



# EXISTING CONDITIONS





# EXISTING CONDITIONS

LEGEND

- EX. CROSSWALK
- EX. GRASS
- EX. TREE
- EX. SHRUB
- EX. MULCH BED
- EX. CONCRETE WALK
- EX. BENCH ON CONC. PAD
- EX. LIGHT
- EX. TRASH AND RECYCLING
- EX. UTILITIES



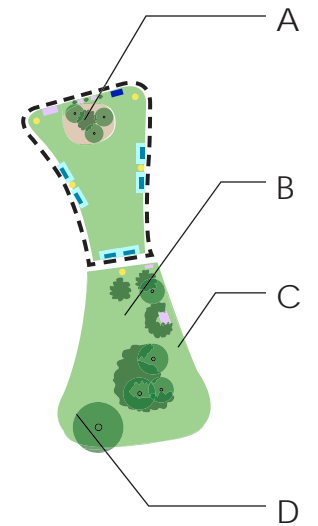
GRAPHIC SCALE IN FEET





# EXISTING CONDITIONS

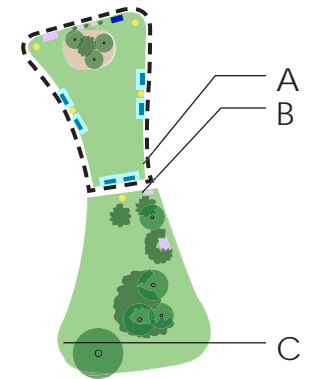
VEGETATION





# EXISTING CONDITIONS

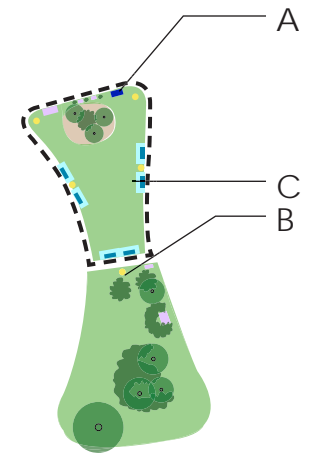
PEDESTRIAN CIRCULATION





# EXISTING CONDITIONS

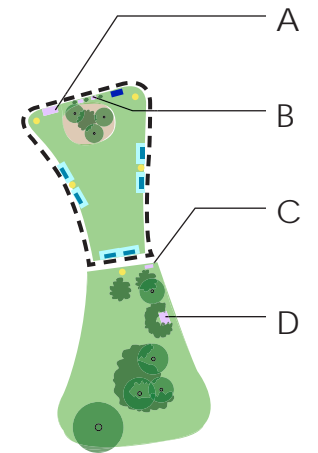
SITE FURNISHINGS





# EXISTING CONDITIONS

## UTILITIES





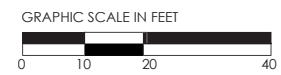
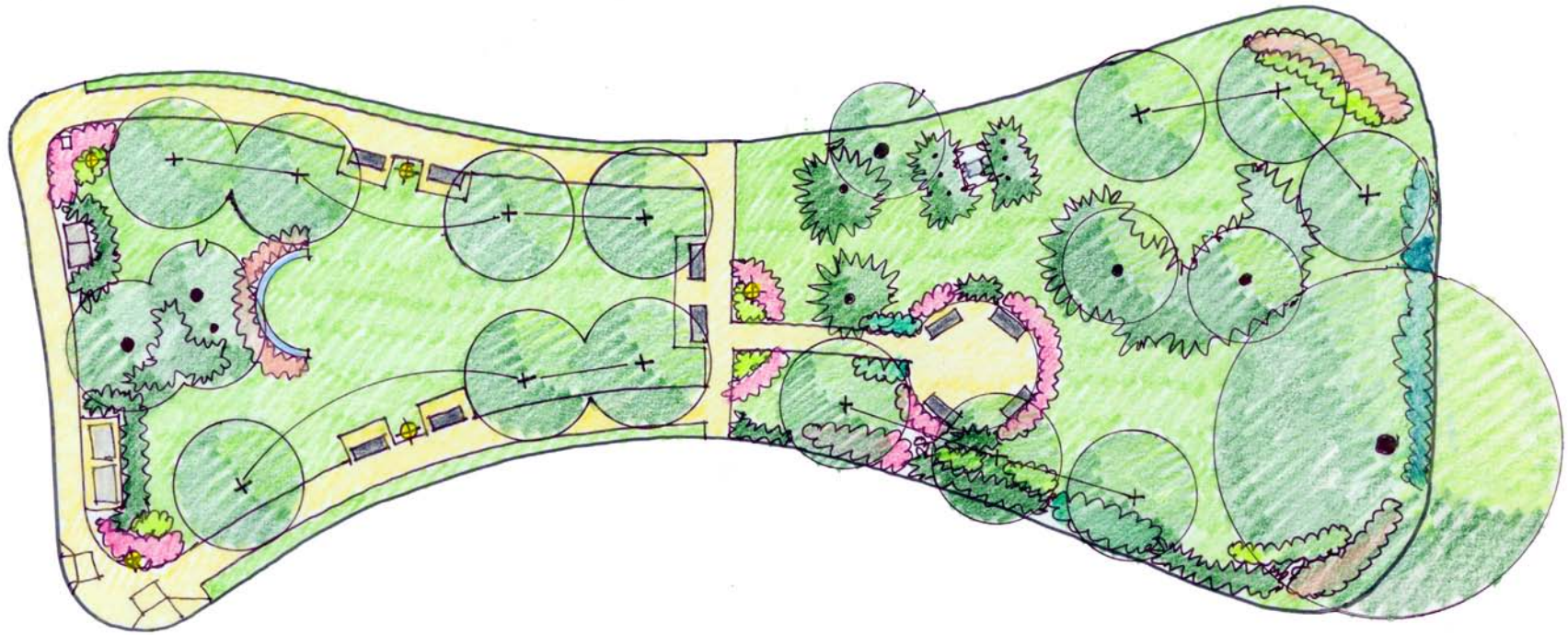
# INSPIRATION





# SCHEMATIC DESIGN

ALTERNATE E





# FINAL SCHEMATIC DESIGN







Thank You

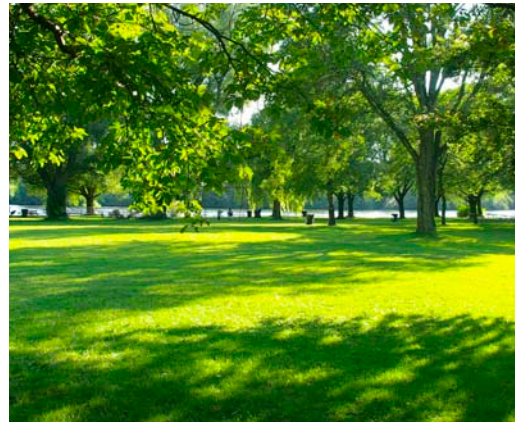




We look forward to working with you!



RAY DUNETZ  
**LANDSCAPE**  
ARCHITECTURE



For Questions or Comments  
Please Contact:

Elaine Gentile

Newton Parks and Recreation Department

[egentile@newtonma.gov](mailto:egentile@newtonma.gov) (617) 796-1500