

TOWNHOUSES - 8 UNITS

70,335 ± s.f.

Drawing

SK-1

PROJECT: 1521 BEACON ST. - TOWNHOUSES

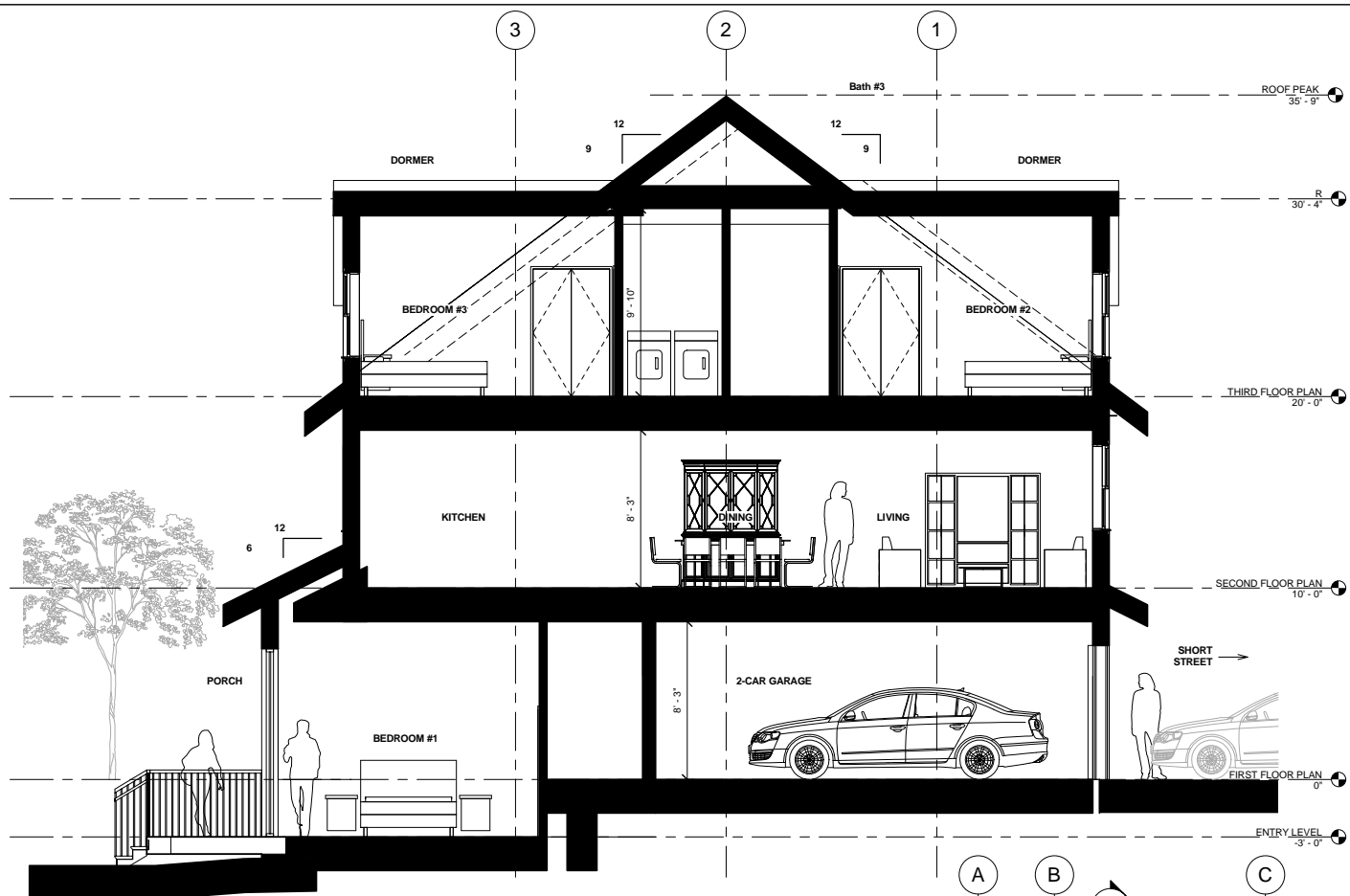
TITLE: SITE PLAN - 8 UNITS

SCALE: 1/32" = 1'-0" PROJECT NO.: 14064.00

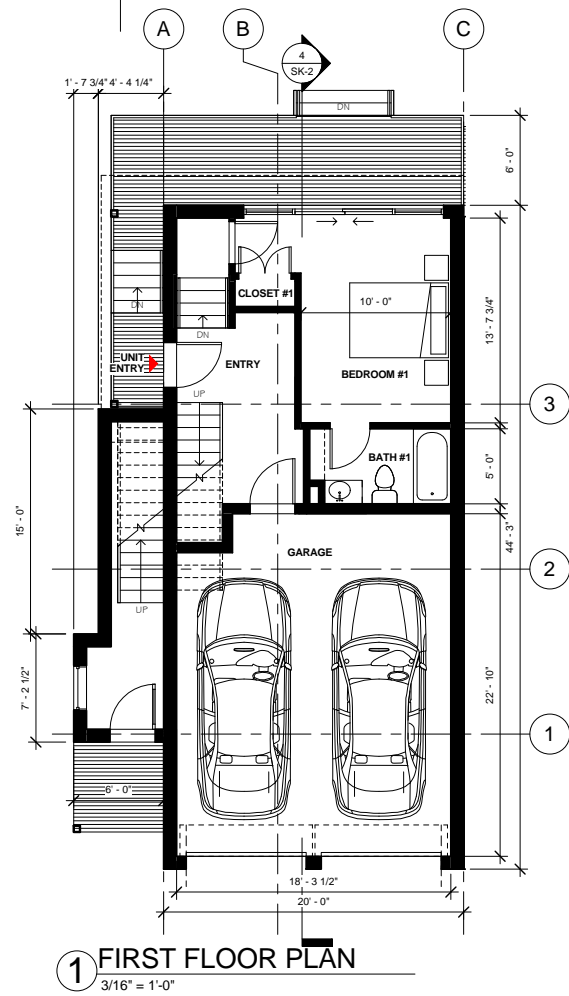
DATE: 06/21/2016 BULLETIN NO.:

PCA

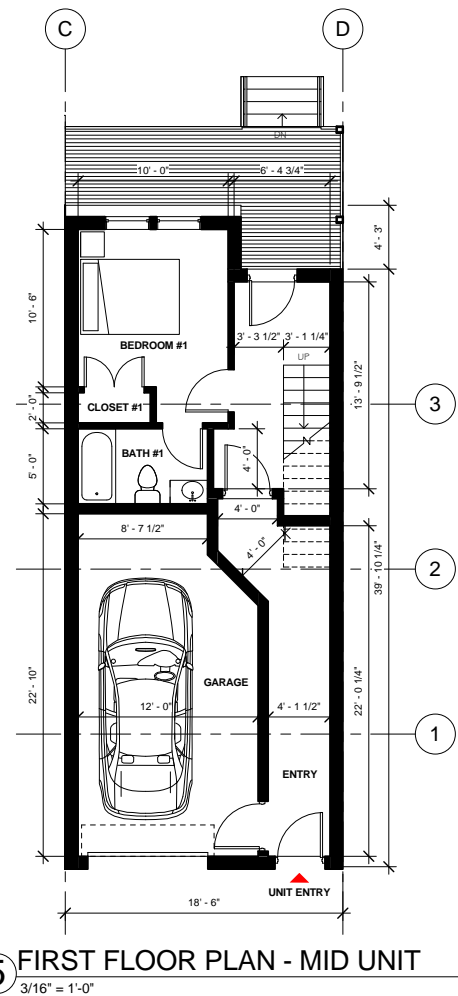
PRELLWITZ / CHILINSKI ASSOCIATES INC.
 221 Hampshire Street Cambridge MA 02139
 T 617-547-8120 F 617-661-4986



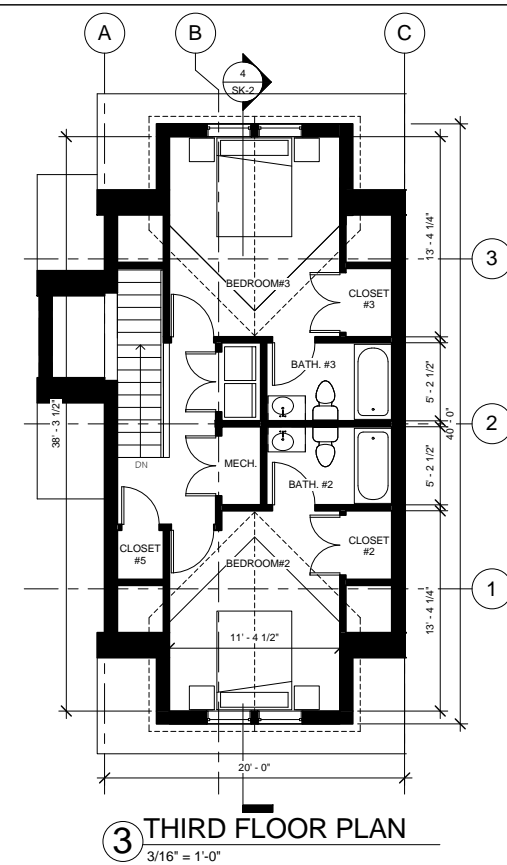
4 TOWNHOUSE SECTION
1/4" = 1'-0"



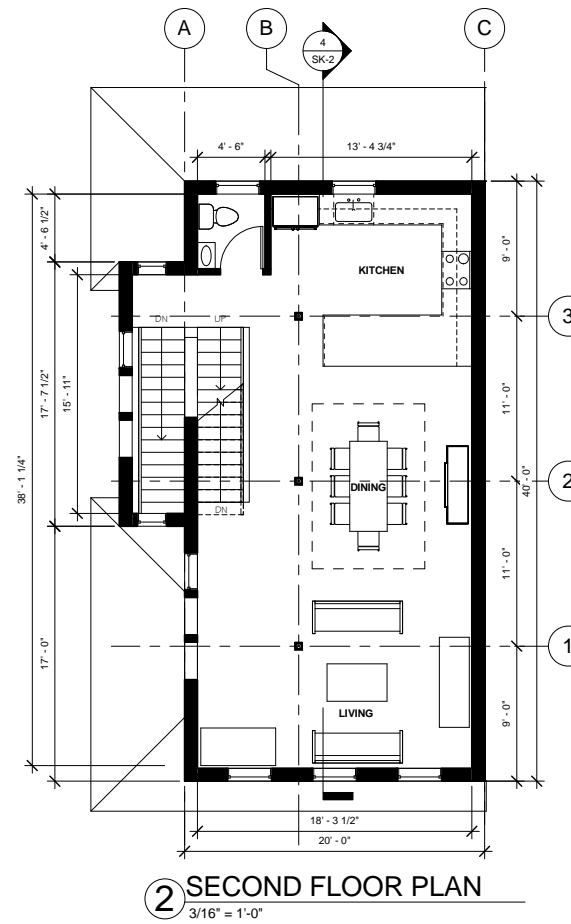
1 FIRST FLOOR PLAN
3/16" = 1'-0"



5 FIRST FLOOR PLAN - MID UNIT
3/16" = 1'-0"



3 THIRD FLOOR PLAN
3/16" = 1'-0"



2 SECOND FLOOR PLAN
3/16" = 1'-0"

PCA
PRELWITZ CHILINSKI ASSOCIATES
Architecture Planning Interiors

ARCHITECT
PRELWITZ CHILINSKI
ASSOCIATES, INC.
221 Hampshire Street
Cambridge, MA 02139
617-547-8120

OWNER
CHARLES RIVER REALTY
GROUP
1461 VFW Parkway
West Roxbury, MA 02132

CONTRACTOR FIRM
Address
City, State ZIP
###-###-####

**1521 BEACON ST. -
TOWNHOUSES**

1521 BEACON STREET, WABAN, MA PCA PROJECT #: 14064.00

REVISIONS:

ORIGINAL ISSUE
ORIGINAL SHEET ISSUE
06/21/2016

SCALE: As indicated

PLANS &
BUILDING
SECTION

SK-2
© 2014 PCA



SHORT STREET FACADES

Drawing

SK-3

PROJECT: 1521 BEACON ST. - TOWNHOUSES

TITLE: VIEW OF SHORT ST. FACADES

SCALE: PROJECT NO.: 14064.00

DATE: 06/21/16 BULLETIN NO.:

PCA

PRELLWITZ / CHILINSKI ASSOCIATES INC.
221 Hampshire Street Cambridge MA 02139
T 617-547-8120 F 617-661-4986