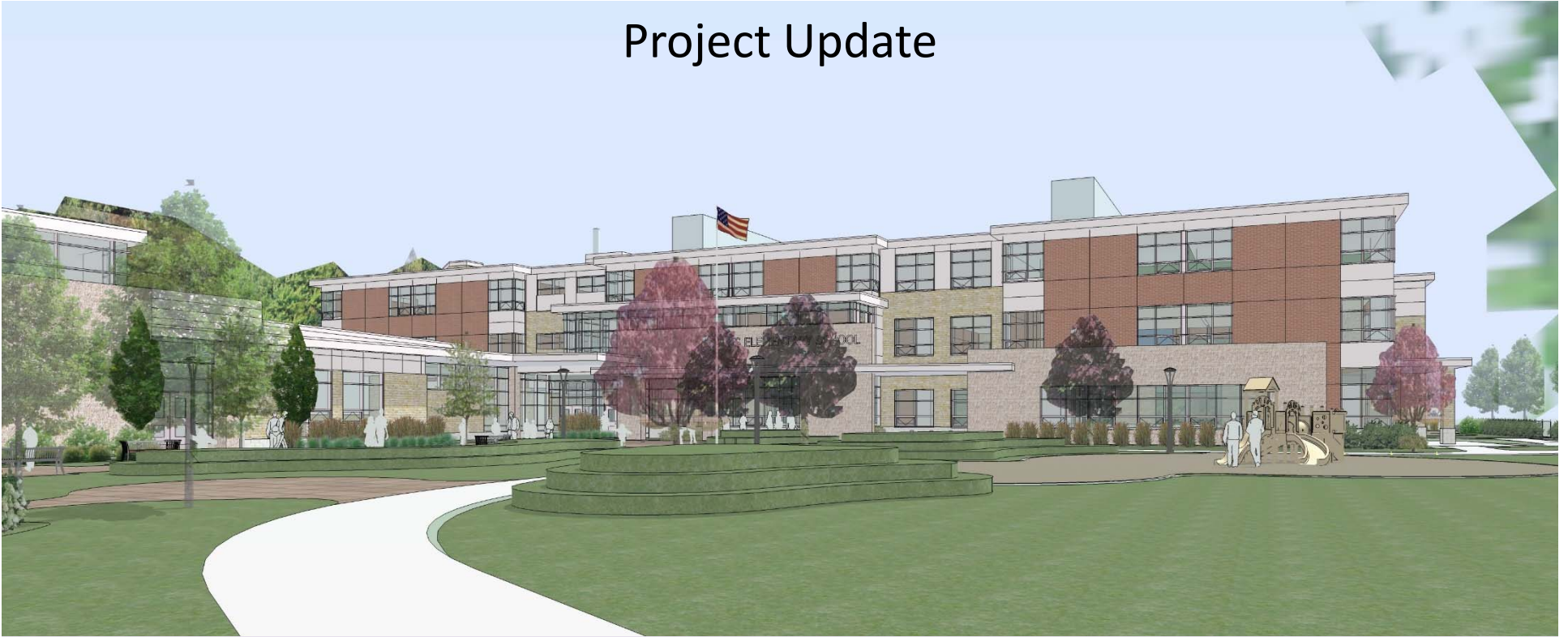


# Zervas Elementary School

## Project Update



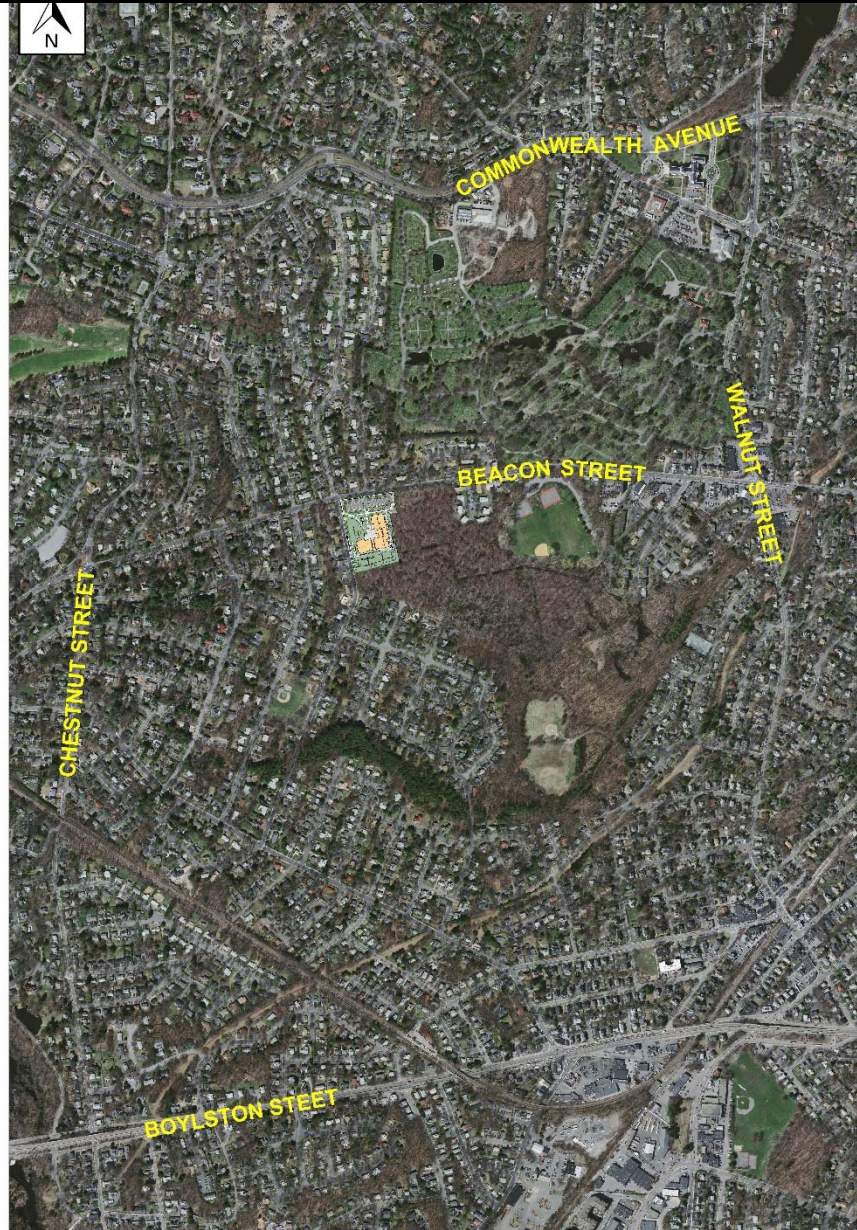
Waban Area Council Meeting  
April 14, 2016



Perkins Eastman | **DPC**



# Project Update Traffic Study

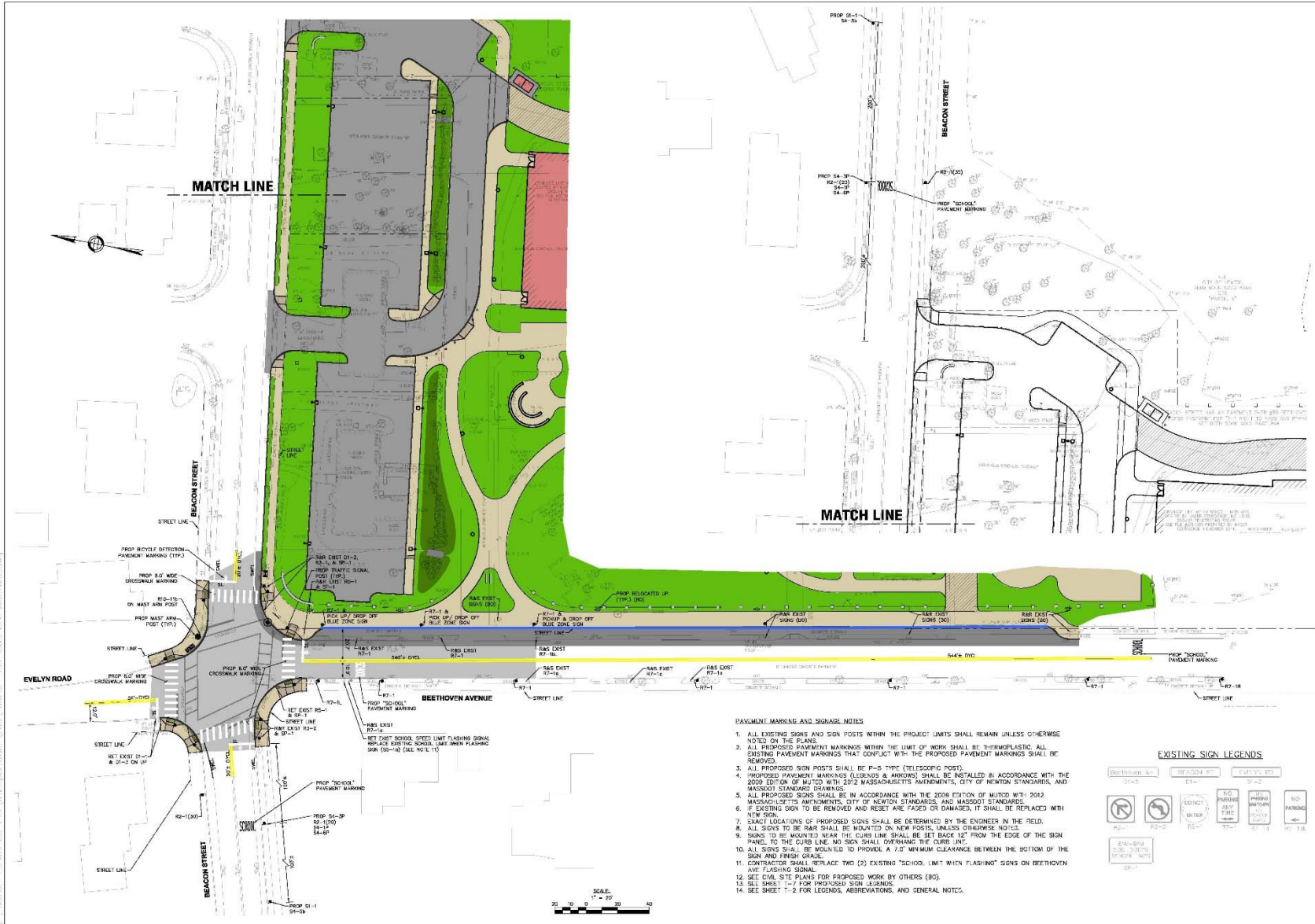


# Project Update– Site Plan

Perkins Eastman | *DPC*



# Project Update Traffic Study



**Design Partnership**  
OF CAMBRIDGE

ARCHITECTURE  
PROGRAMMING  
LANDSCAPE ARCHITECTURE  
INTERIOR DESIGN

HOOD BUSINESS PARK  
500 RUTHERFORD AVENUE  
CHARLESTOWN, MA 02129  
TEL: 617.241.2143  
WWW.DPBC.COM

**ZERVAS  
ELEMENTARY  
SCHOOL**

**NEWTON, MA**

**Nitsch Engineering**

www.nitsch.com

PS&E Design Submission  
March 7, 2016

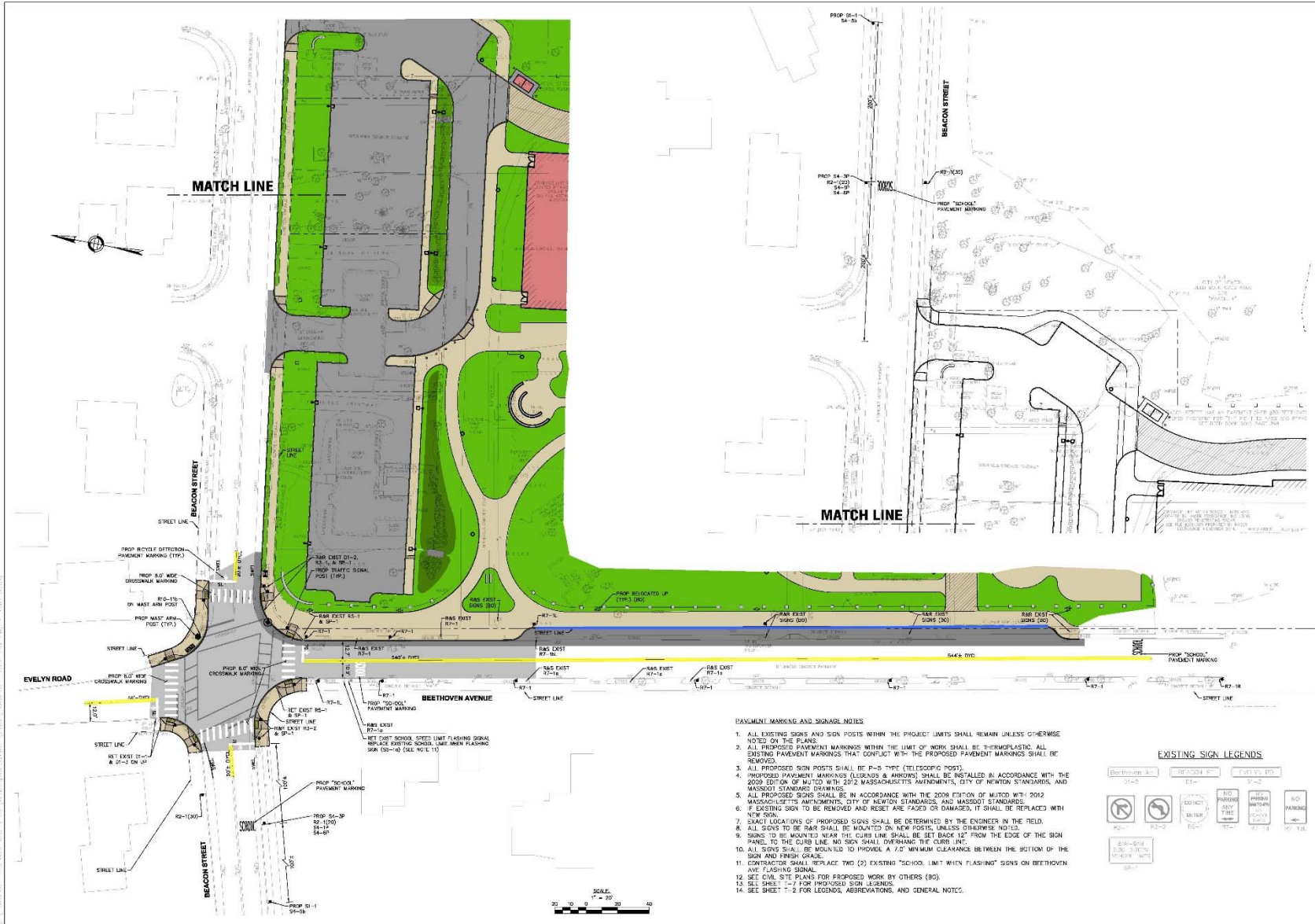
DATE	REVISION

Drawn By: [Name]  
Checked By: [Name]  
Scale: [Scale]  
Professional Seal: [Seal]

8. Control  
9. E. Control  
10. Field  
11. [Name]  
12. [Name]

**SIGN AND PAVEMENT  
MARKING PLAN  
OPTION 1**

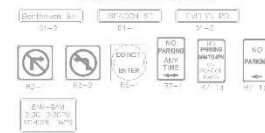
# Project Update Traffic Study



### PAVEMENT MARKING AND SIGNAGE NOTES

1. ALL EXISTING SIGNS AND SIGN POSTS WITHIN THE PROJECT LIMITS SHALL REMAIN UNLESS OTHERWISE NOTED ON THE PLANS.
2. ALL PROPOSED PAVEMENT MARKINGS WITHIN THE LIMIT OF WORK SHALL BE 3/4" PROPLASTIC. ALL EXISTING PAVEMENT MARKINGS THAT CONFLICT WITH THE PROPOSED PAVEMENT MARKINGS SHALL BE REMOVED.
3. ALL PROPOSED SIGN POSTS SHALL BE P-8 TYPE (TELESCOPIC POST).
4. ALL PROPOSED PAVEMENT MARKINGS (LEGENDS & ARROWS) SHALL BE INSTALLED IN ACCORDANCE WITH THE 2009 EDITION OF MUTCD WITH 2012 MASSACHUSETTS AFFINEMENTS, CITY OF NEWTON STANDARDS, AND MASSDOT STANDARD DRAWINGS.
5. ALL PROPOSED SIGNS SHALL BE IN ACCORDANCE WITH THE 2008 EDITION OF MUTCD WITH 2012 MASSACHUSETTS AFFINEMENTS, CITY OF NEWTON STANDARDS, AND MASSDOT STANDARD DRAWINGS.
6. IF EXISTING SIGNS TO BE REMOVED AND RESET ARE FADED OR DAMAGED, IT SHALL BE REPLACED WITH NEW SIGN.
7. SIGN LOCATION OF PROPOSED SIGNS SHALL BE DETERMINED BY THE ENGINEER IN THE FIELD.
8. ALL SIGNS TO BE RAR SHALL BE MOUNTED ON NEW POSTS, UNLESS OTHERWISE NOTED.
9. SIGNS TO BE MOUNTED NEAR THE CURB LINE SHALL BE SET BACK 12" FROM THE EDGE OF THE SIGN PANEL TO THE CURB LINE. NO SIGN SHALL OVERHANG THE CURB LINE.
10. ALL SIGNS SHALL BE MOUNTED TO PROVIDE A 7.5" MINIMUM CLEARANCE BETWEEN THE BOTTOM OF THE SIGN AND FINISH GRADE.
11. CONTRACTOR SHALL REPLACE TWO (2) EXISTING "SCHOOL" LIMIT WITH FLASHING SIGNS ON BEEHIVEN AVE. FLASHING SIGNAL.
12. SET CIVIL SITE PLANS FOR PROPOSED WORK BY OTHERS (90).
13. SEE SHEET T-1 FOR PROPOSED SIGN LEGENDS.
14. SEE SHEET T-2 FOR LEGENDS, ABBREVIATIONS, AND GENERAL NOTICES.

### EXISTING SIGN LEGENDS



**Design Partnership**  
OF CAMBRIDGE

ARCHITECTURE  
PROGRAMMING  
INTERIOR DESIGN

HOOD BUSINESS PARK  
500 RUTHERFORD AVENUE  
CHARLESTOWN, MA 02129  
TEL: 617.241.2143  
WWW.HOODDESIGN.COM

**ZERVAS  
ELEMENTARY  
SCHOOL**

**NEWTON, MA**

Nitsch Engineering

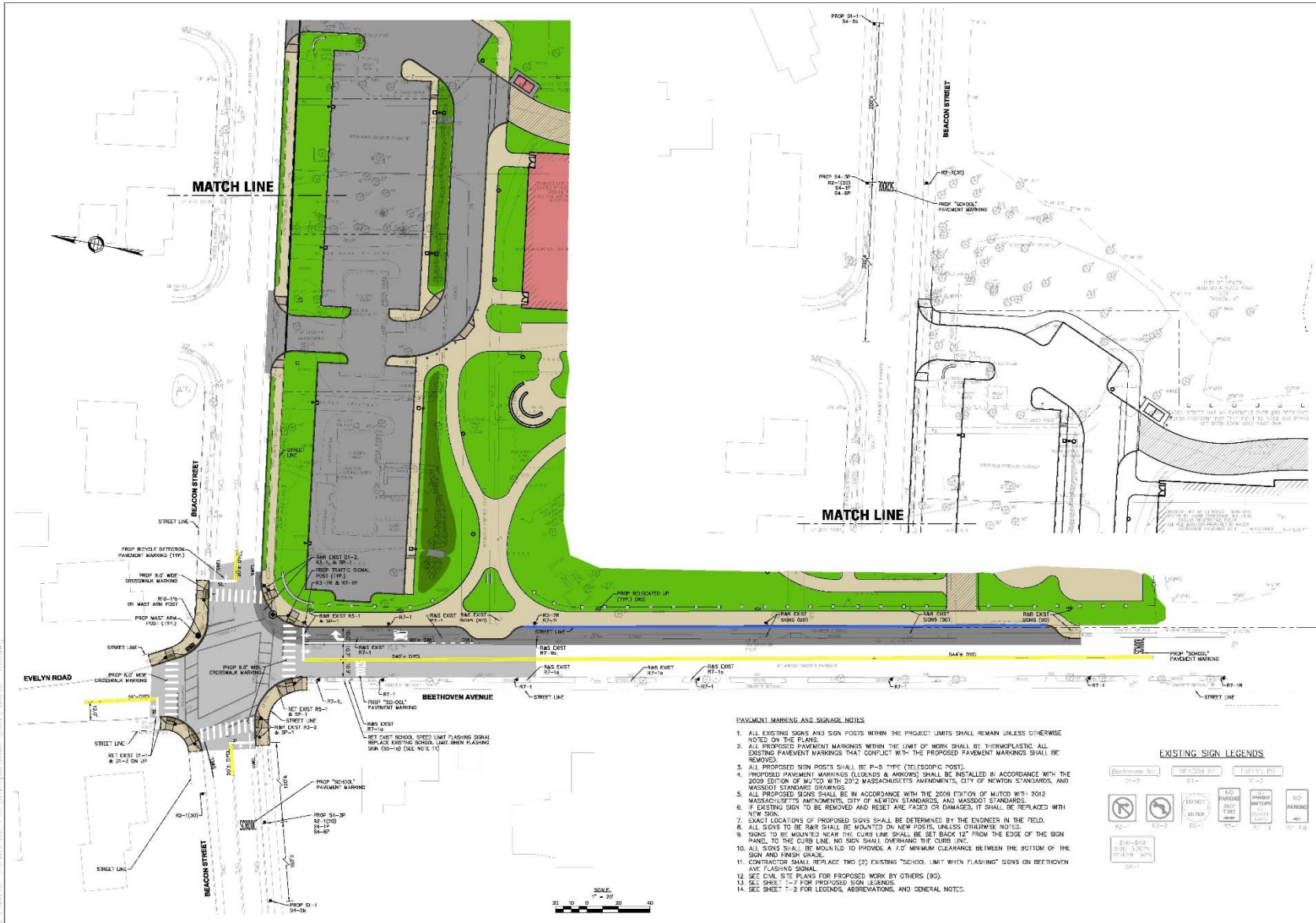
PS&E Design Submission  
March 7, 2016

DATE	REVISION

Drawn By: B. Collins  
Checked By: S. Lee  
Date: 3/16/16  
Professional Seal:

**SIGN AND PAVEMENT  
MARKING PLAN  
OPTION 2**

# Project Update Traffic Study



### PAVEMENT MARKINGS AND SIGNAGE NOTES

1. ALL EXISTING SIGNS AND SIGN POSTS WITHIN THE PROJECT LIMITS SHALL REMAIN UNLESS OTHERWISE NOTED ON THE PLANS.
2. ALL PROPOSED PAVEMENT MARKINGS WITHIN THE LIMIT OF WORK SHALL BE THERMOPLASTIC. ALL EXISTING PAVEMENT MARKINGS THAT CONFLICT WITH THE PROPOSED PAVEMENT MARKINGS SHALL BE REMOVED.
3. ALL PROPOSED SIGN POSTS SHALL BE P-8 TYPE (TELESCOPIC POST).
4. PROPOSED PAVEMENT MARKINGS (LEGENDS & ARROWS) SHALL BE REPAIRED IN ACCORDANCE WITH THE 2008 EDITION OF MUTCD WITH 2012 MASSACHUSETTS AMENDMENTS, CITY OF NEWTON STANDARDS, AND MASSDOT STANDARD DRAWINGS.
5. ALL PROPOSED SIGNS SHALL BE IN ACCORDANCE WITH THE 2008 EDITION OF MUTCD WITH 2012 MASSACHUSETTS AMENDMENTS, CITY OF NEWTON STANDARDS, AND MASSDOT STANDARD DRAWINGS.
6. IF EXISTING SIGNS TO BE REMOVED AND RESET ARE FACED OR DAMAGED, IT SHALL BE REPLACED WITH NEW SIGNS.
7. SIGN LOCATIONS OF PROPOSED SIGNS SHALL BE DETERMINED BY THE ENGINEER IN THE FIELD.
8. ALL SIGNS TO BE RAR SHALL BE MOUNTED ON NEW POSTS, UNLESS OTHERWISE NOTED.
9. SIGNS TO BE MOUNTED NEAR THE CURB LINE SHALL BE SET BACK 12" FROM THE EDGE OF THE SIGN PANEL TO THE CURB LINE. NO SIGN SHALL OVERHANG THE CURB LINE.
10. ALL SIGNS SHALL BE MOUNTED TO PROVIDE A 7'-0" MINIMUM CLEARANCE BETWEEN THE BOTTOM OF THE SIGN AND FINISH GRADE.
11. CONTRACTOR SHALL REPLACE TWO (2) EXISTING "SCHOOL" LIMIT WITH FLASHING SIGNS ON BEETHOVEN AND FLASHING SIGNAL.
12. SET CIVIL SITE PLANS FOR PROPOSED WORK BY OTHERS (30).
13. SEE SHEET T-2 FOR PROPOSED SIGN LEGENDS.
14. SEE SHEET T-2 FOR LEGENDS, ABBREVIATIONS, AND GENERAL NOTES.

### EXISTING SIGN LEGENDS



**Design partnership**  
OF CAMBRIDGE

ARCHITECTURE  
PROGRAMMING  
MASTER PLANNING  
INTERIOR DESIGN

HOOD BUSINESS PARK  
500 RUTHERFORD AVENUE  
CHARLESTOWN, MA 02129  
P: 617.241.9800 F: 617.241.5143  
www.nitschpe.com

**ZERVAS  
ELEMENTARY  
SCHOOL**

NEWTON, MA

Nitsch Engineering  
www.nitschpe.com  
1000 State Street  
Boston, MA 02109  
P: 617.241.9800  
F: 617.241.5143

PS&E Design Submission  
March 7, 2016

DATE	REVISION

Drawn By: [Name]  
Checked By: [Name]  
Date: [Date]  
Project Number: [Number]

S. Corbett  
G. Dukakis  
June 1, 2008

### SIGN AND PAVEMENT MARKING PLAN